

Probe BAP1/CEN3q Dual Color FISH Probe
Product No. GC097

BAP1

Probe Size Approximately 150kb
Fluorophore TexRed
Location 3p21.1
Also known as UCHL2; hucep-6; HUCEP-13

CEN3q

Probe Size Approximately 500kb
Fluorophore FITC
Location 3q12.1

BAP1

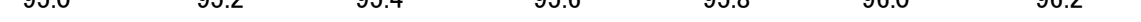
51.8 52.0 52.2 52.4 52.6 52.8 53.0 (MB)



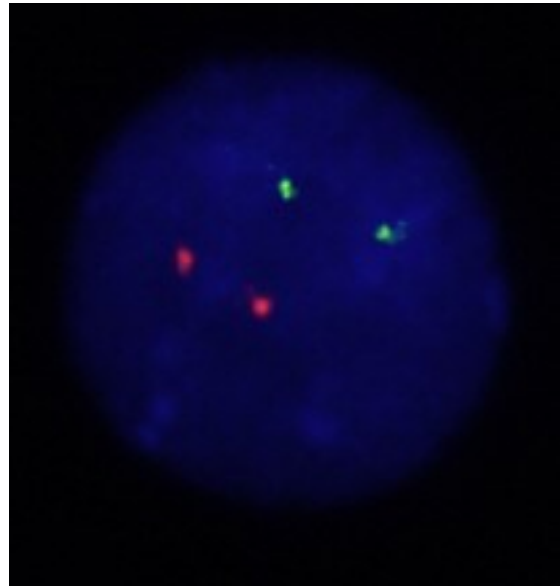
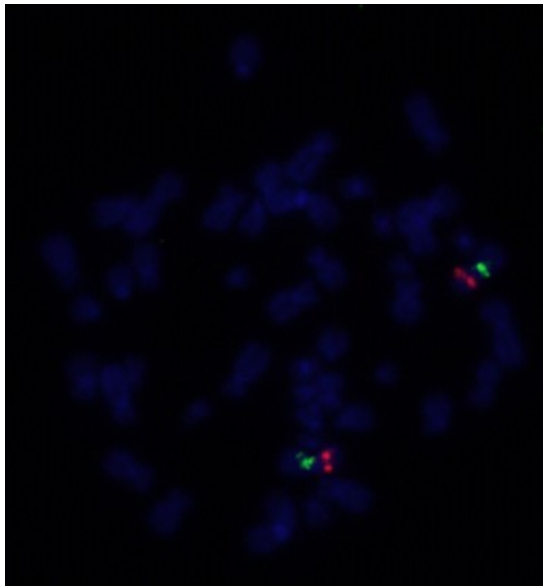
~150kb

CEN3q

95.0 95.2 95.4 95.6 95.8 96.0 96.2 (MB)



~500kb



Representative images of normal human cell (lymphocyte) stain with the dual color FISH probe. The left image is chromosomes at metaphase, and the right image is an interphase nucleus.