

Probe 20q11.21/CEN20p Dual Color FISH Probe  
Product No. GC099

20q11.21 (ID1, BCL2L1 and HM13)

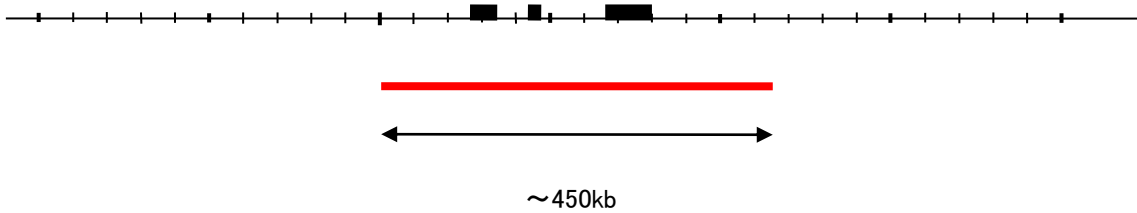
Probe Size Approximately 450kb  
Fluorophore TexRed  
Location 20q11.21

CEN20p

Probe Size Approximately 400kb  
Fluorophore FITC  
Location 20p11.21

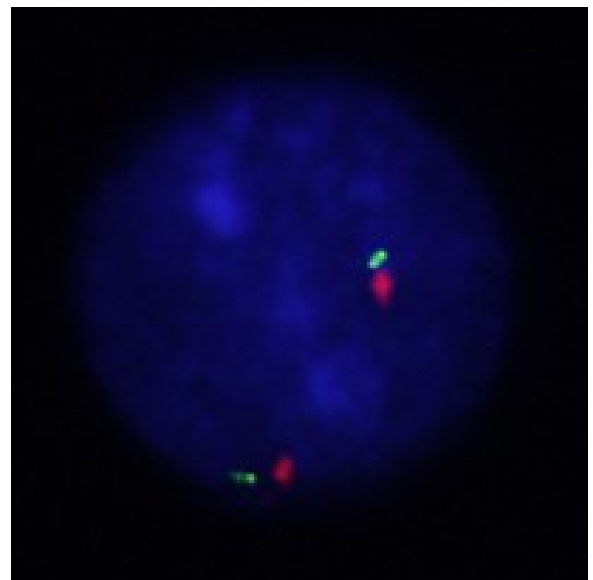
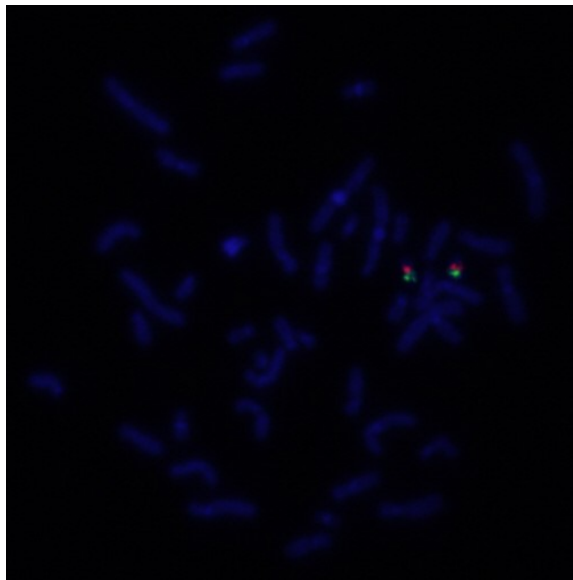
20q11.21 (HM13, ID1 and BCL2L1)

29.6 29.8 30.0 HM13 ID1 BCL2L1 30.4 30.6 30.8 (MB)



CEN20p

21.6 21.8 22.0 22.2 22.4 22.6 22.8 (MB)



Representative images of normal human cell (lymphocyte) stain with the dual color FISH probe. The left image is chromosomes at metaphase, and the right image is an interphase nucleus.