

Probe TOP1/CEN20p Dual Color FISH Probe  
Product No. GC100

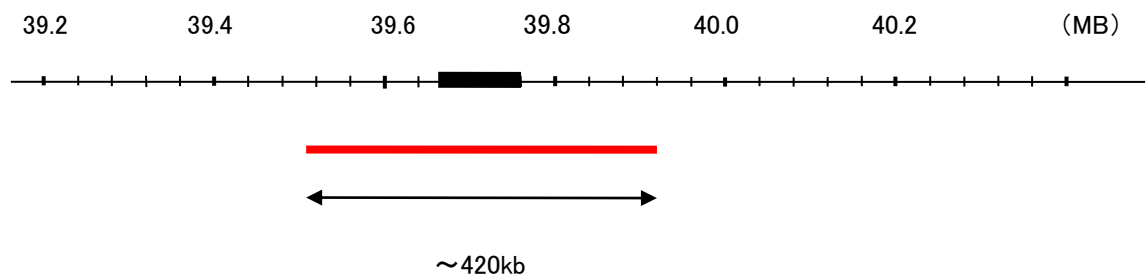
TOP1

Probe Size Approximately 420kb  
Fluorophore TexRed  
Location 20q12  
Also known as TOP1

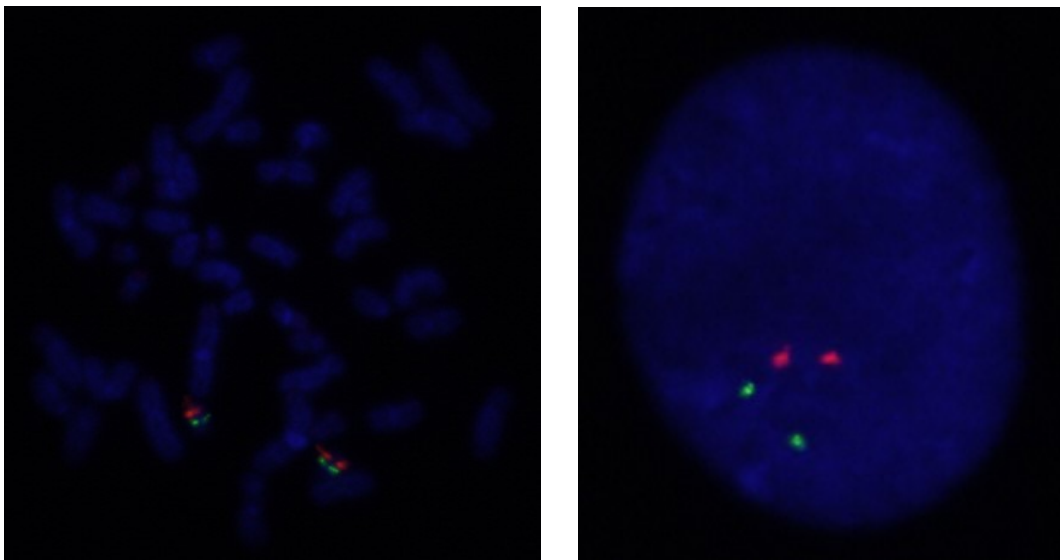
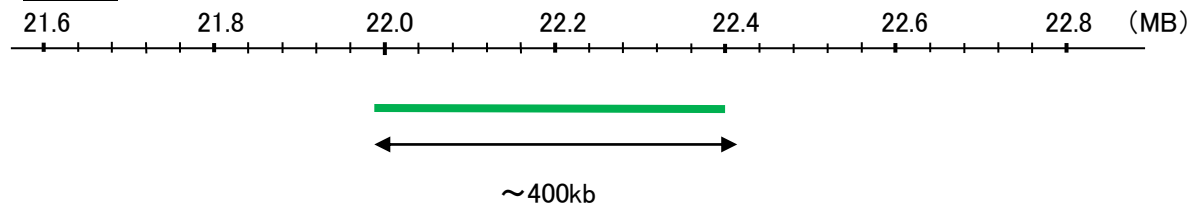
CEN20p

Probe Size Approximately 400kb  
Fluorophore FITC  
Location 20p11.21

TOP1



CEN20p



Representative images of normal human cell (lymphocyte) stain with the dual color FISH probe. The left image is chromosomes at metaphase, and the right image is an interphase nucleus.