

Probe CTNNB1/CEN3q Dual Color FISH Probe
Product No. GC102

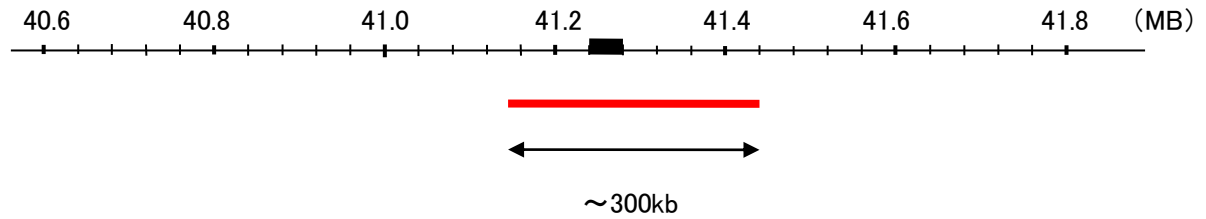
CTNNB1

Probe Size Approximately 300kb
Fluorophore TexRed
Location 3p21
Also known as CTNNB; MRD19; armadillo

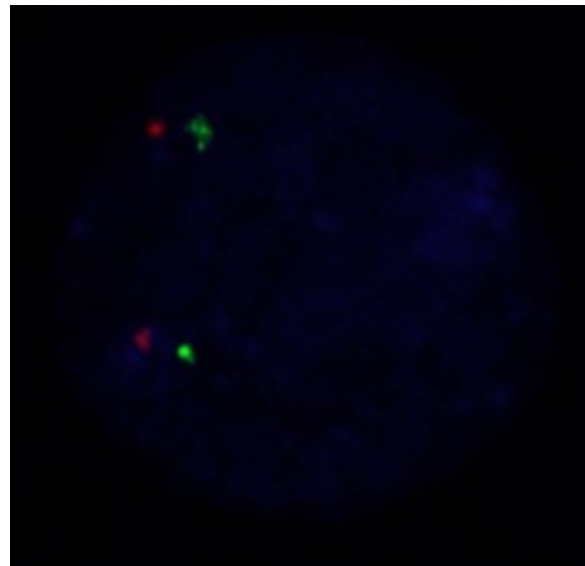
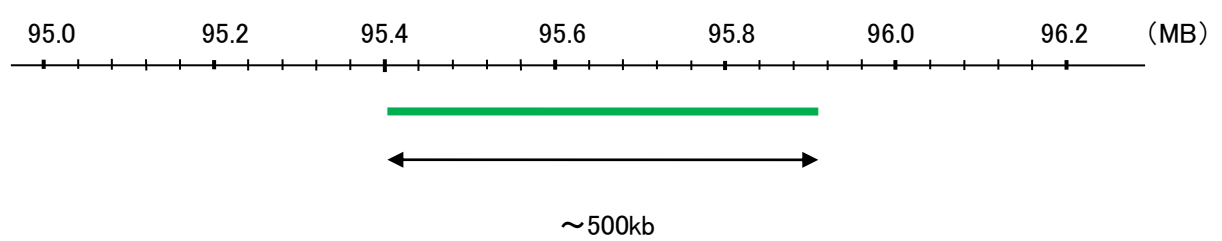
CEN3q

Probe Size Approximately 500kb
Fluorophore FITC
Location 3q12.1

CTNNB1



CEN3q



Representative images of normal human cell (lymphocyte) stain with the dual color FISH probe. The left image is chromosomes at metaphase, and the right image is an interphase nucleus.