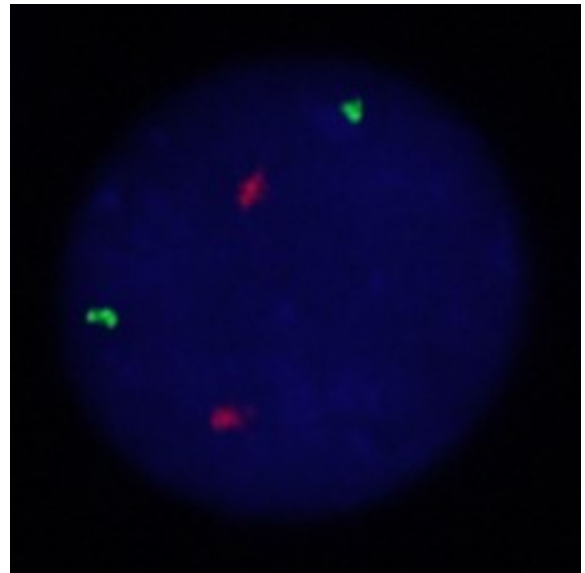
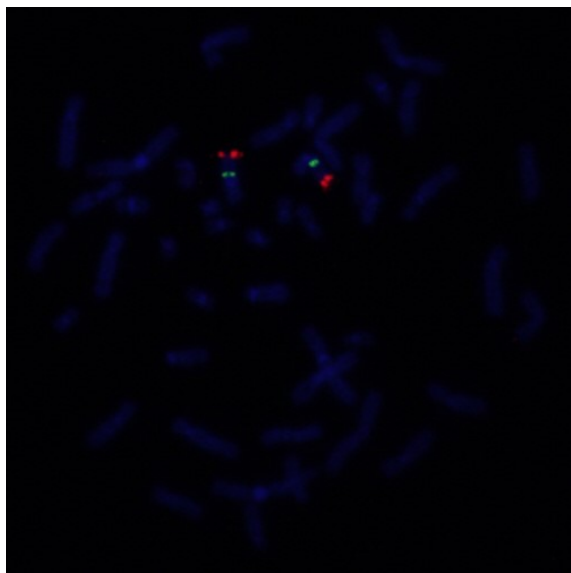
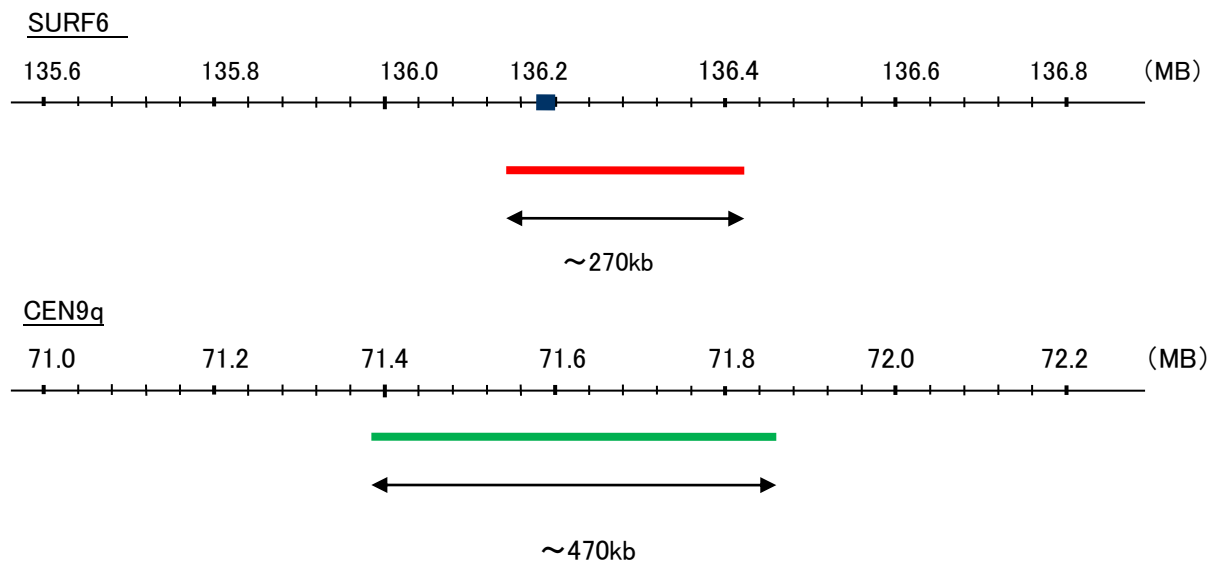


Probe SURF6/CEN9q Dual Color FISH Probe
Product No. GC103

SURF6
Probe Size Approximately 270kb
Fluorophore TexRed
Location 9p34
Also known as RRP14

CEN9q
Probe Size Approximately 470kb
Fluorophore FITC
Location 9q21



Representative images of normal human cell (lymphocyte) stain with the dual color FISH probe. The left image is chromosomes at metaphase, and the right image is an interphase nucleus.