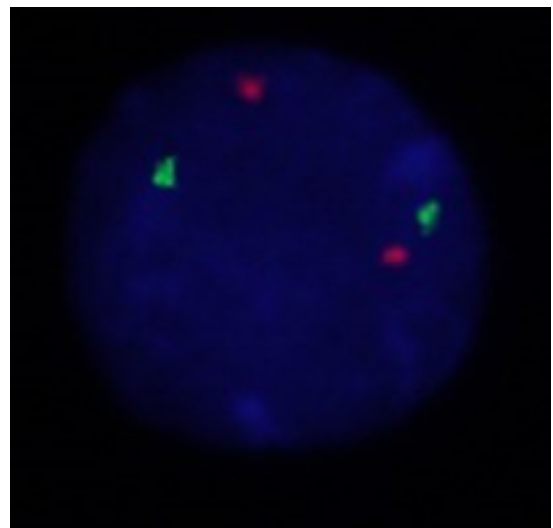
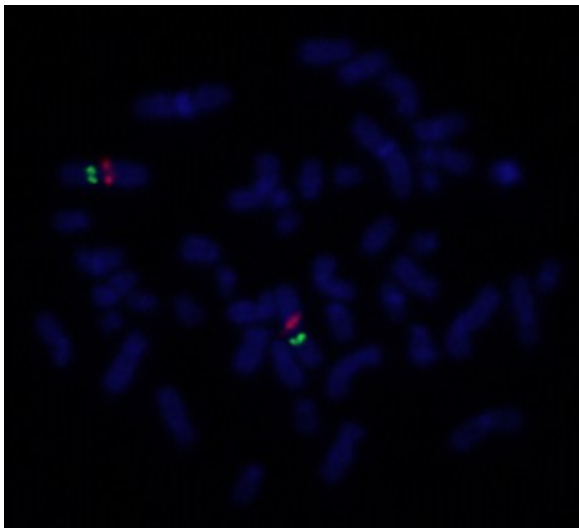
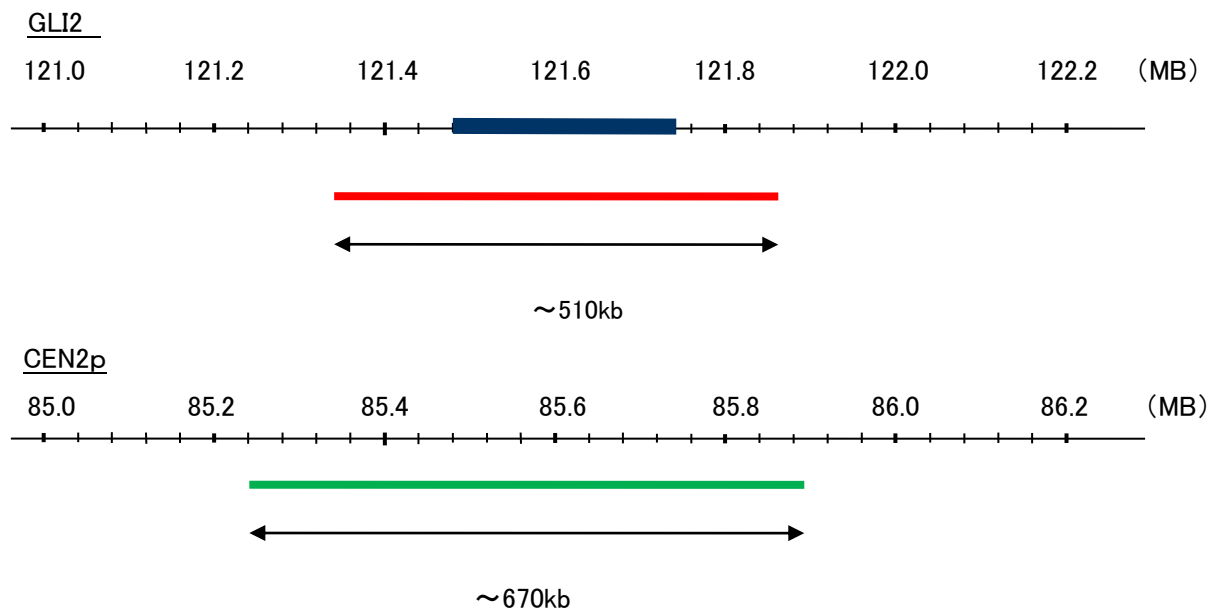


Probe GLI2/CEN2p Dual Color FISH Probe  
Product No. GC105

GLI2  
Probe Size Approximately 510kb  
Fluorophore TexRed  
Location 2q14.2  
Also known as CJS; HPE9; PHS2; THP1; THP2

CEN2p  
Probe Size Approximately 670kb  
Fluorophore FITC  
Location 2p11.2



Representative images of normal human cell (lymphocyte) stain with the dual color FISH probe. The left image is chromosomes at metaphase, and the right image is an interphase nucleus.