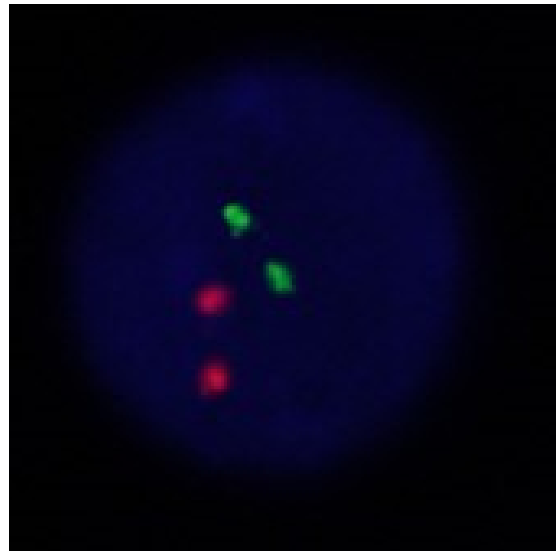
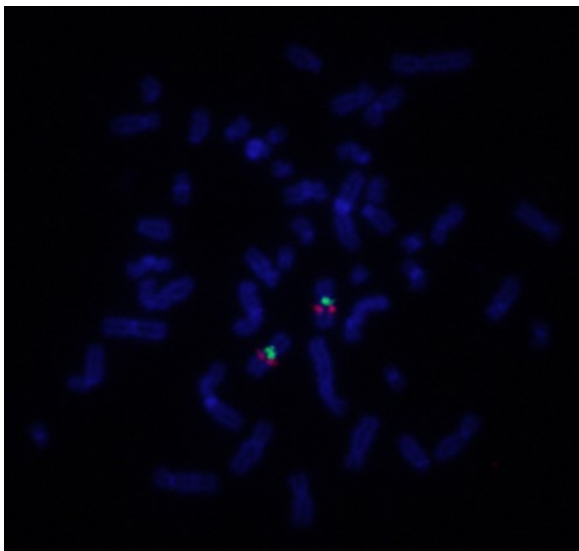
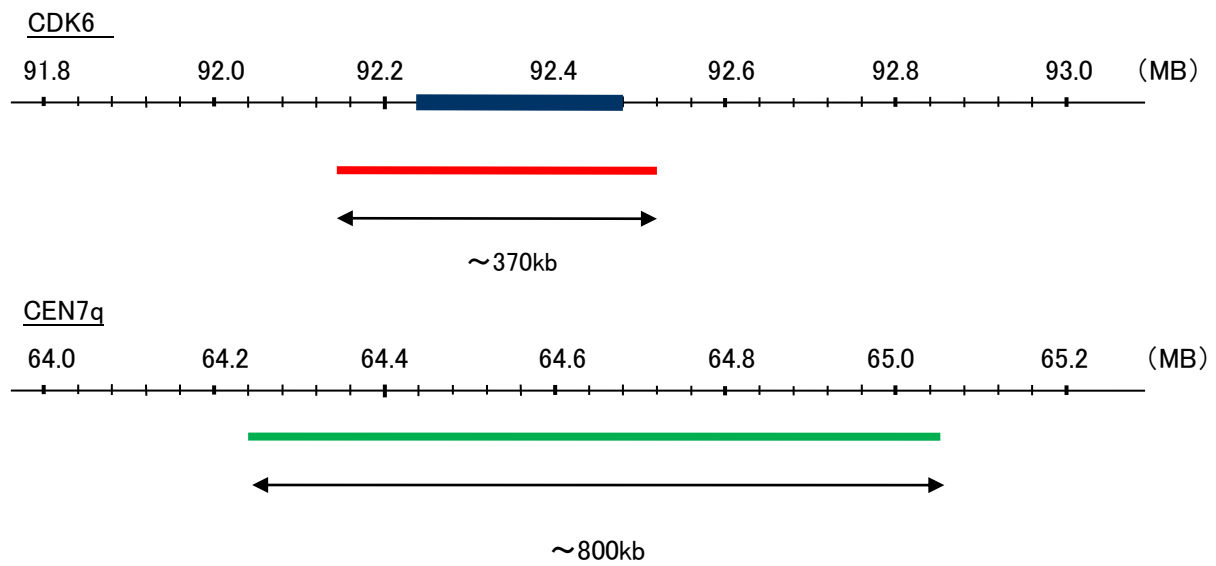


Probe CDK6/CEN7q Dual Color FISH Probe  
Product No. GC106

CDK6  
Probe Size Approximately 370kb  
Fluorophore TexRed  
Location 7q21.2  
Also known as MCPH12; PLSTIRE

CEN7q  
Probe Size Approximately 800kb  
Fluorophore FITC  
Location 7q11.21



Representative images of normal human cell (lymphocyte) stain with the dual color FISH probe. The left image is chromosomes at metaphase, and the right image is an interphase nucleus.