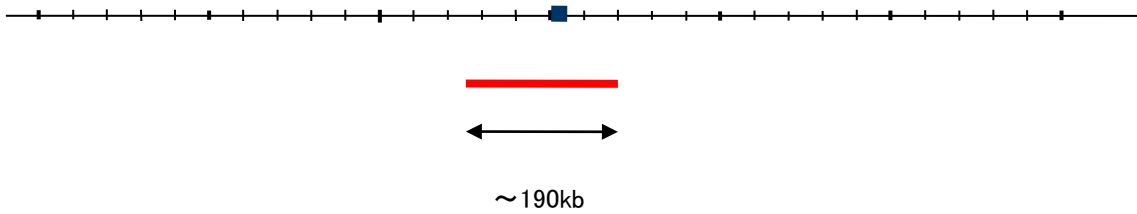


Probe HOXA9/CEN7p Dual Color FISH Probe  
Product No. GC109

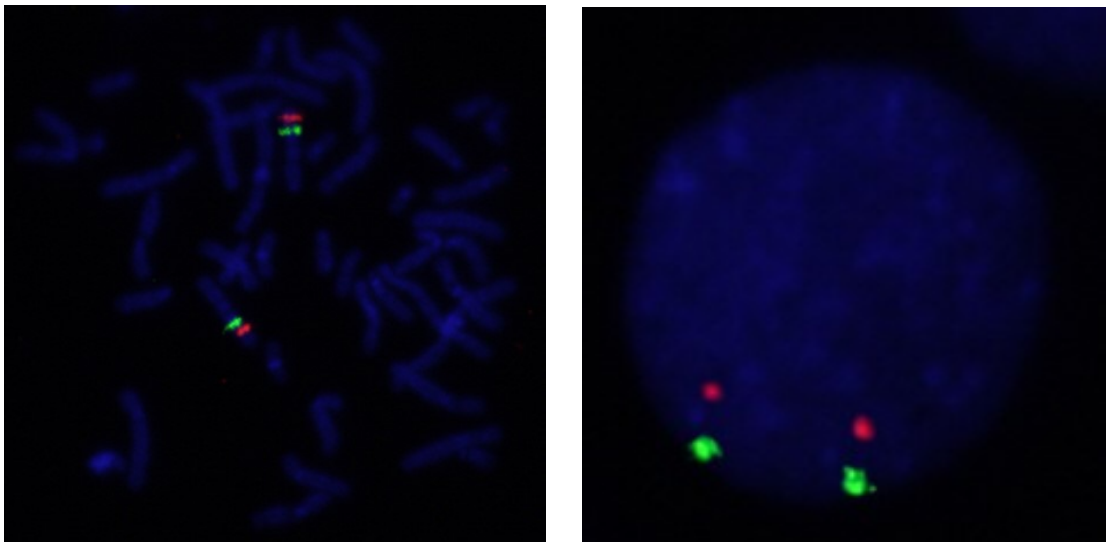
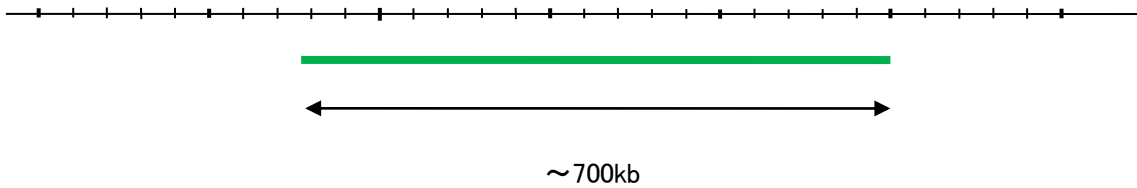
HOXA9  
Probe Size Approximately 190kb  
Fluorophore TexRed  
Location 7p15.2  
Also known asHOX1; ABD-B; HOX1G; HOX1.7

CEN7p  
Probe Size Approximately 700kb  
Fluorophore FITC  
Location 7p12.1

HOXA9  
26.6 26.8 27.0 27.2 27.4 27.6 27.8 (MB)



CEN7p  
50.2 50.4 50.6 50.8 51.0 51.2 51.4 (MB)



Representative images of normal human cell (lymphocyte) stain with the dual color FISH probe. The left image is chromosomes at metaphase, and the right image is an interphase nucleus.