

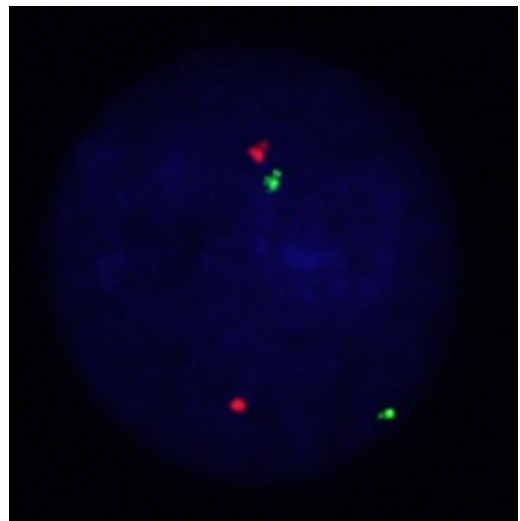
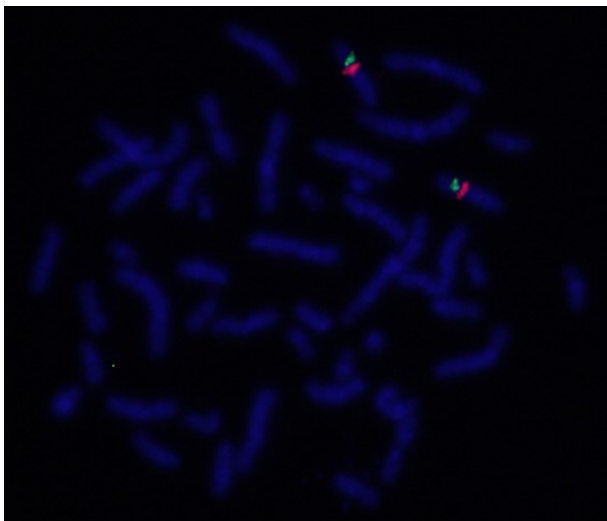
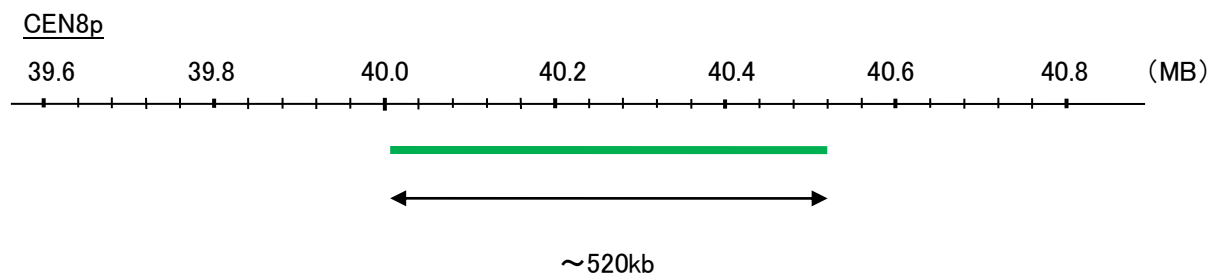
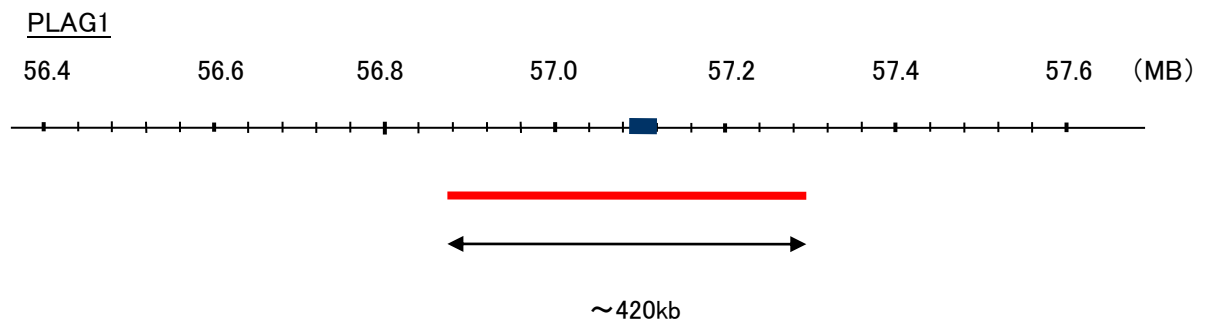
Probe PLAG1/CEN8p Dual Color FISH Probe  
Product No. GC114

**PLAG1**

Probe Size Approximately 420kb  
Fluorophore TexRed  
Location 8q12.1  
Also known as PSA; SGPA; ZNF912

**CEN8p**

Probe Size Approximately 520kb  
Fluorophore FITC  
Location 8p11.21



Representative images of normal human cell (lymphocyte) stain with the dual color FISH probe. The left image is chromosomes at metaphase, and the right image is an interphase nucleus.