

Probe BRCA2/CEN13q Dual Color FISH Probe
Product No. GC116

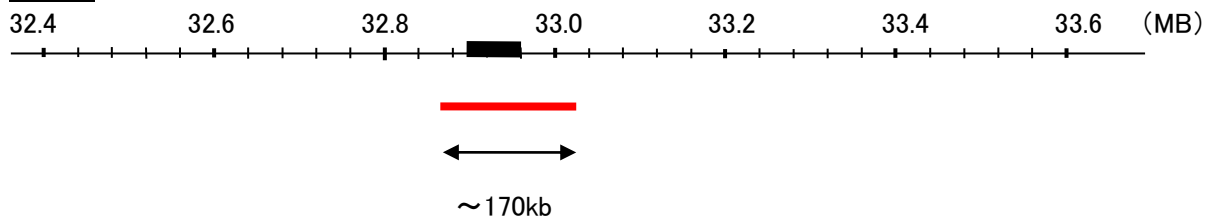
BRCA2

Probe Size Approximately 170kb
Fluorophore TexRed
Location 13q13.1
Also known as FAD; FACD; FAD1; GLM3; BRCC2; FANCD; PNCA2; FANCD1; XRCC11; BROVCA2

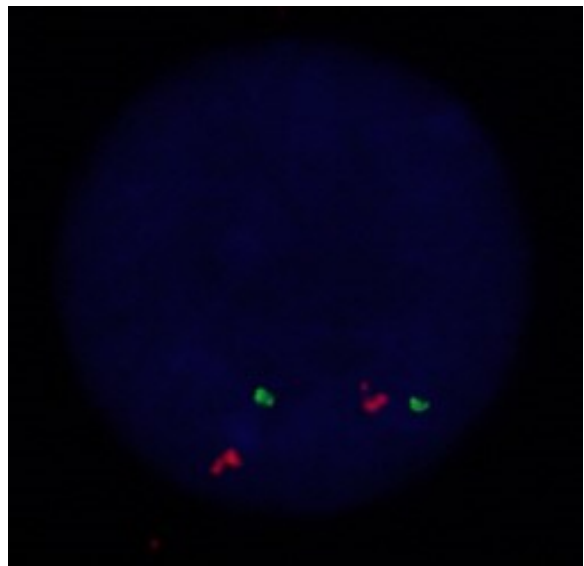
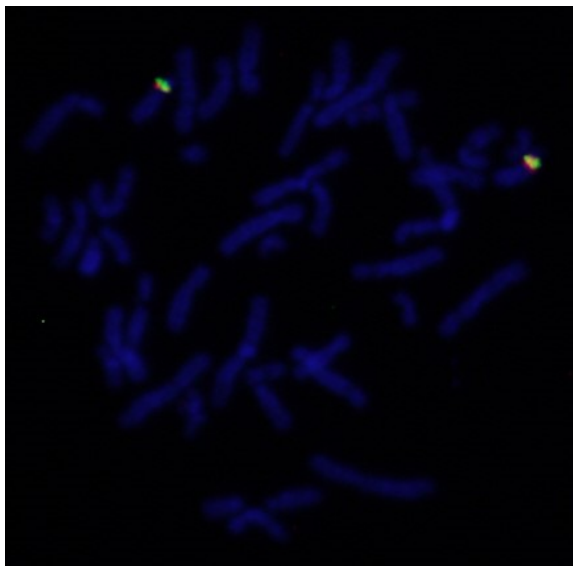
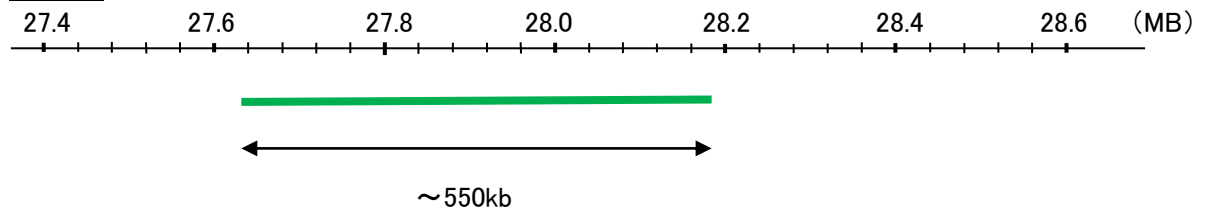
CEN13q

Probe Size Approximately 550kb
Fluorophore FITC
Location 13q12.11

BRCA2



CEN13q



Representative images of normal human cell (lymphocyte) stain with the dual color FISH probe. The left image is chromosomes at metaphase, and the right image is an interphase nucleus.