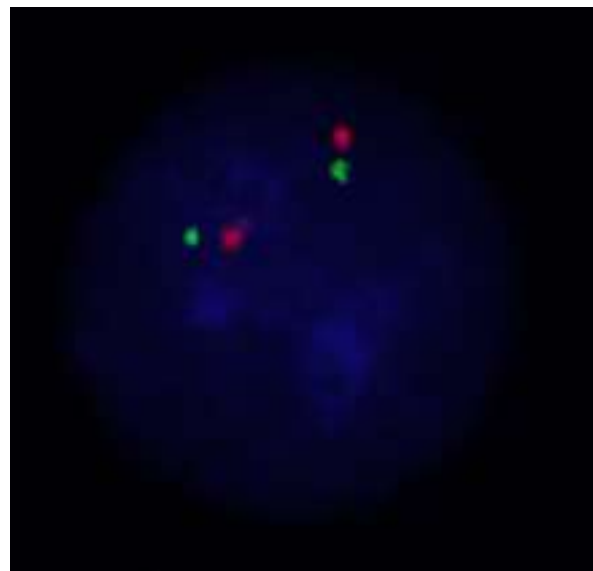
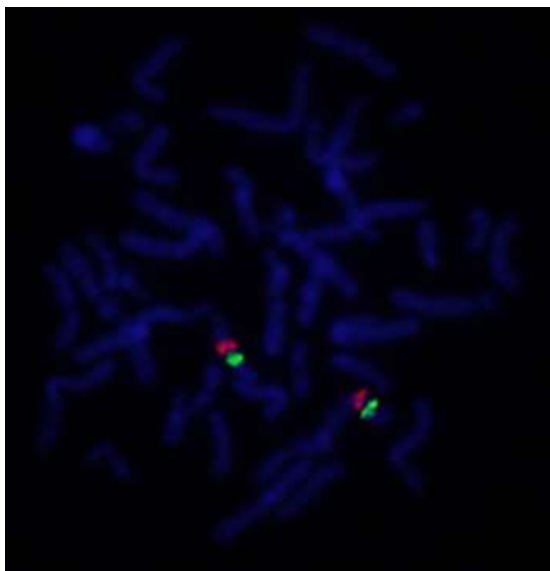
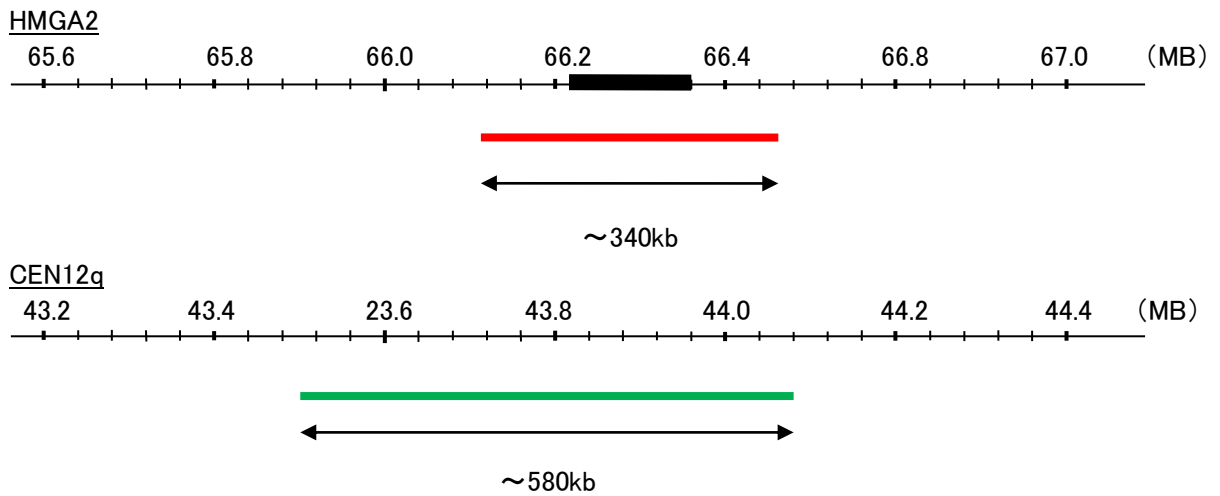


Probe HMGA2/CEN12q Dual Color FISH Probe  
Product No. GC118

**HMGA2**  
Probe Size Approximately 340kb  
Fluorophore TexRed  
Location 12q15  
Also known as BABL; LIPO; HMGIC; HMGI-C; STQTL9

**CEN12q**  
Probe Size Approximately 580kb  
Fluorophore FITC  
Location 12q12



Representative images of normal human cell (lymphocyte) stain with the dual color FISH probe. The left image is chromosomes at metaphase, and the right image is an interphase nucleus.