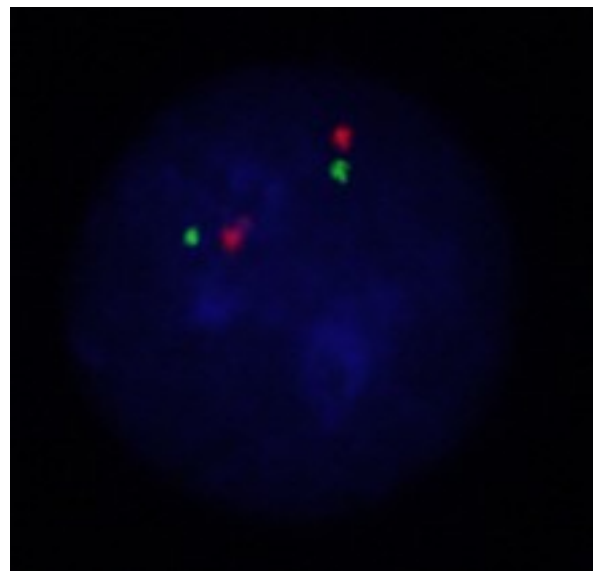
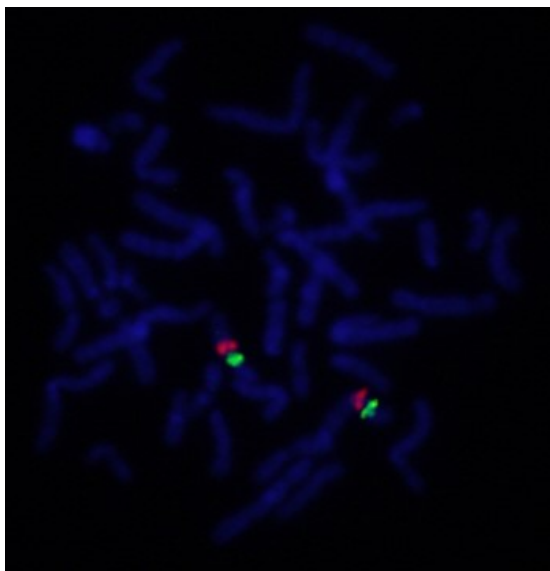
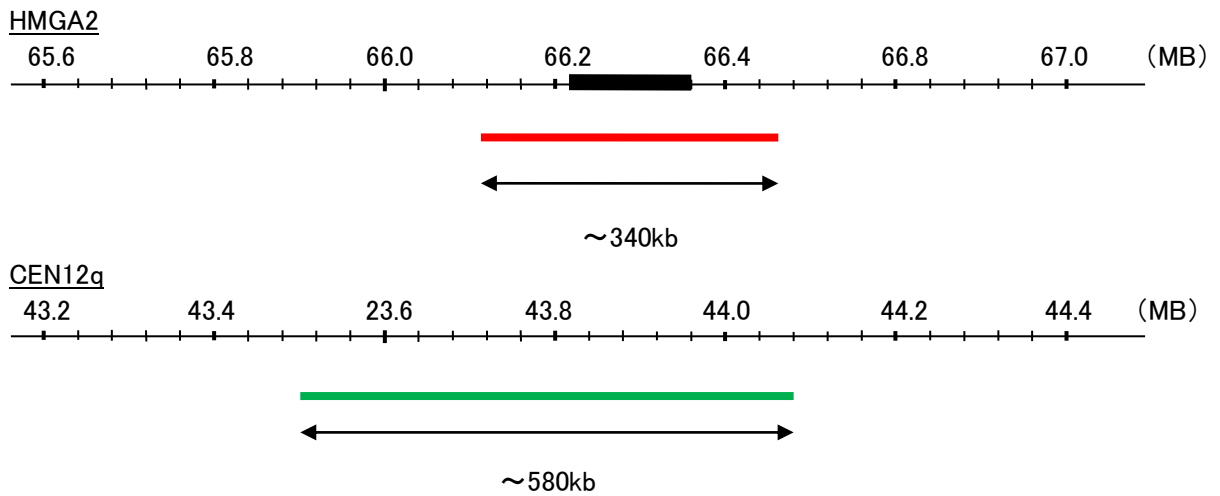


Probe HMGA2/CEN12q Dual Color FISH Probe
Product No. GC118

HMGA2
Probe Size Approximately 340kb
Fluorophore TexRed
Location 12q15
Also known as BABL; LIPO; HMGIC; HMGI-C; STQTL9

CEN12q
Probe Size Approximately 580kb
Fluorophore FITC
Location 12q12



Representative images of normal human cell (lymphocyte) stain with the dual color FISH probe. The left image is chromosomes at metaphase, and the right image is an interphase nucleus.