

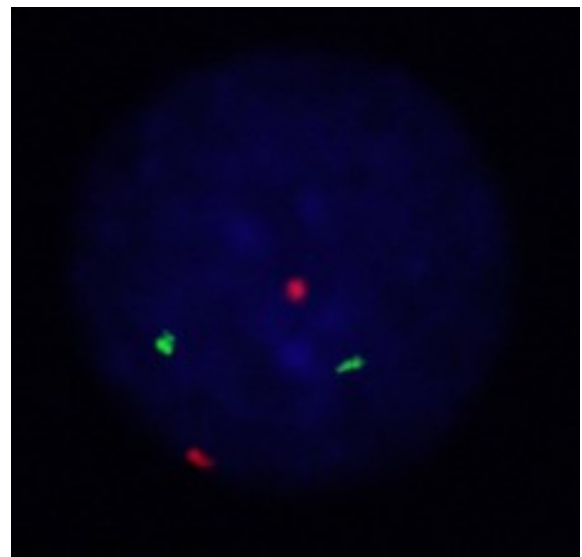
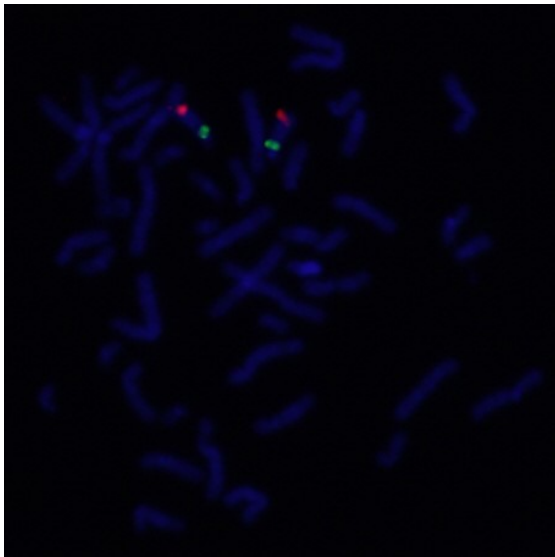
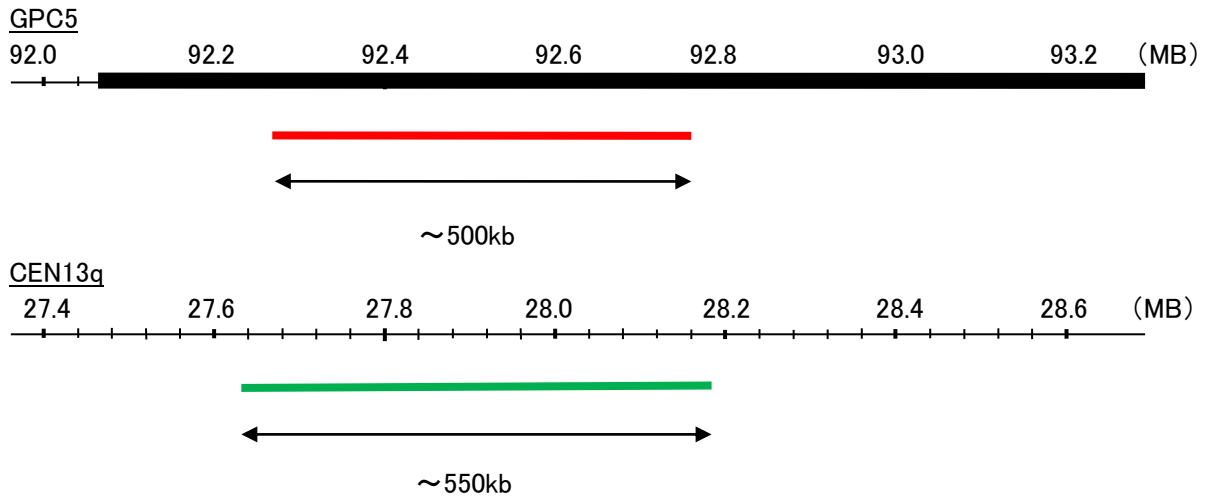
Probe GPC5/CEN13q Dual Color FISH Probe
Product No. GC119

GPC5

Probe Size Approximately 500kb
Fluorophore TexRed
Location 13q32

CEN13q

Probe Size Approximately 550kb
Fluorophore FITC
Location 13q12.11



Representative images of normal human cell (lymphocyte) stain with the dual color FISH probe. The left image is chromosomes at metaphase, and the right image is an interphase nucleus.