

Probe CD274/CD273/CEN9q Tricolor FISH Probe
Product No. GC165

CD274

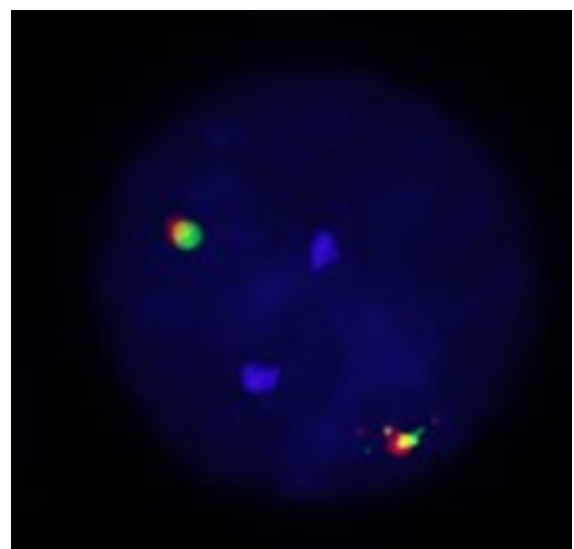
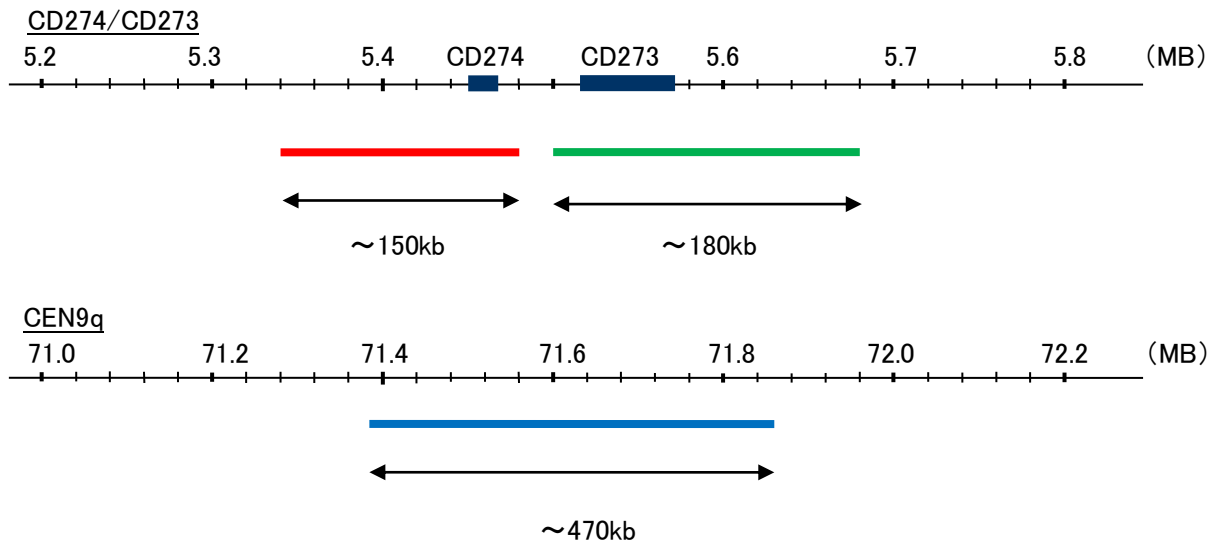
Probe Size Approximately 150kb
Fluorophore TexRed
Location 9p24
Also known as B7-H; B7H1; PDL1; PD-L1; PDCD1L1; PDCD1LG1

CD273

Probe Size Approximately 180kb
Fluorophore FITC
Location 9p24.2
Also known as B7DC; Btdc; PDL2; CD273; PD-L2; PDCD1L2; bA574F11.2

CEN9q

Probe Size Approximately 470kb
Fluorophore DEAC
Location 9q21



Representative images of normal human cell (lymphocyte) stain with the dual color FISH probe. The left image is chromosomes at metaphase, and the right image is an interphase nucleus.