

Probe TERC/CEN3q Dual Color FISH Probe  
Product No. GC120

**TERC**

Probe Size Approximately 230kb  
Fluorophore TexRed  
Location 3q26  
Also known as TR; hTR; TRC3; DKCA1; PFBMFT2; SCARNA19

**CEN3q**

Probe Size Approximately 500kb  
Fluorophore FITC  
Location 3q12.1

TERC

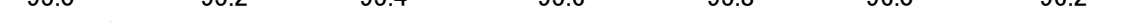
168.8 169.0 169.2 169.4 169.6 169.8 170.0 (MB)



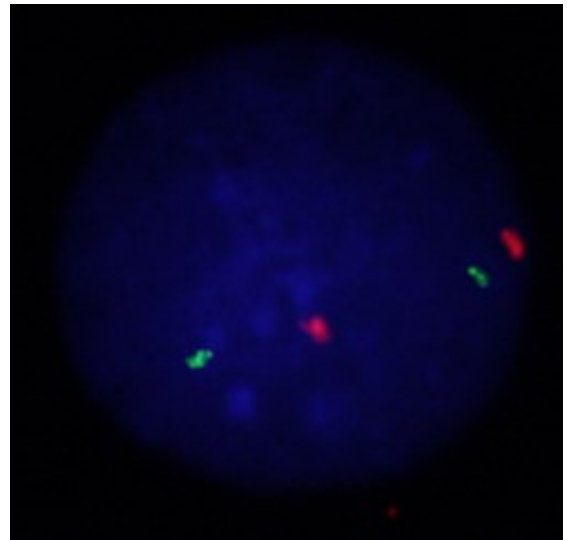
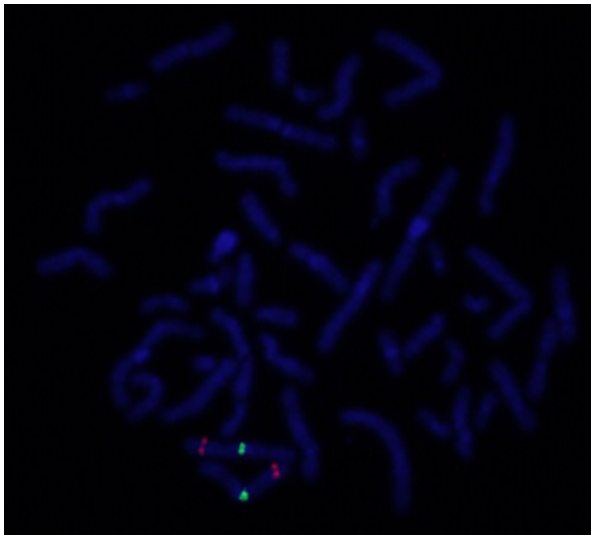
~230kb

CEN3q

95.0 95.2 95.4 95.6 95.8 96.0 96.2 (MB)



~500kb



Representative images of normal human cell (lymphocyte) stain with the dual color FISH probe. The left image is chromosomes at metaphase, and the right image is an interphase nucleus.