

Probe MRP1/CEN16q Dual Color FISH Probe
Product No. GC121

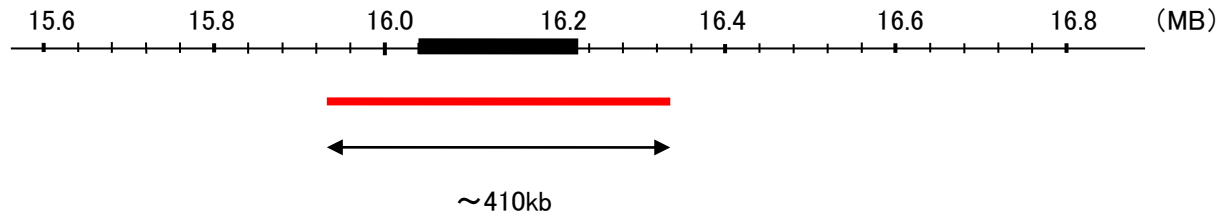
MRP1

Probe Size Approximately 410kb
Fluorophore TexRed
Location 16q21
Also known as MRP; ABCC; GS-X; ABCC1; ABC29

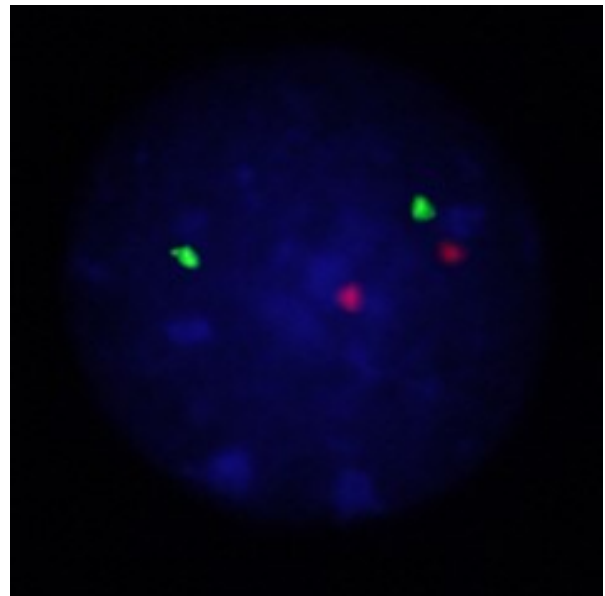
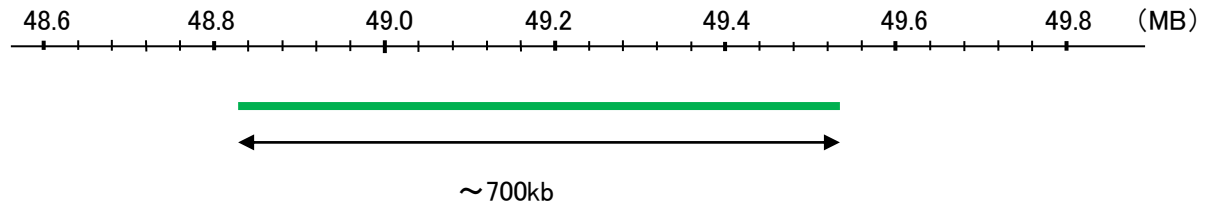
CEN16q

Probe Size Approximately 700kb
Fluorophore FITC
Location 16q12.1

MRP1



CEN16q



Representative images of normal human cell (lymphocyte) stain with the dual color FISH probe. The left image is chromosomes at metaphase, and the right image is an interphase nucleus.