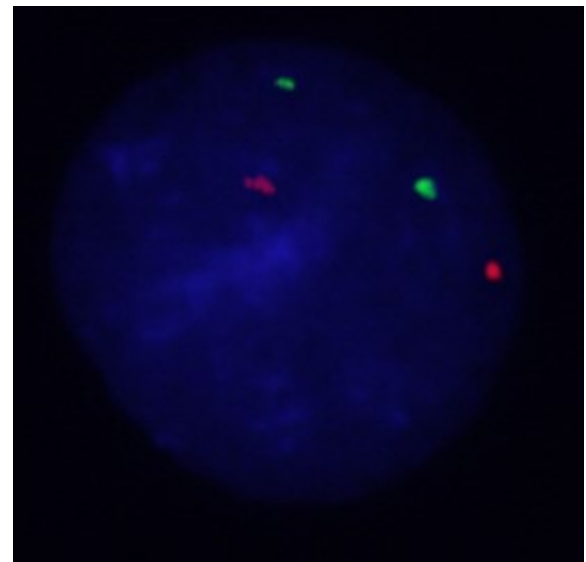
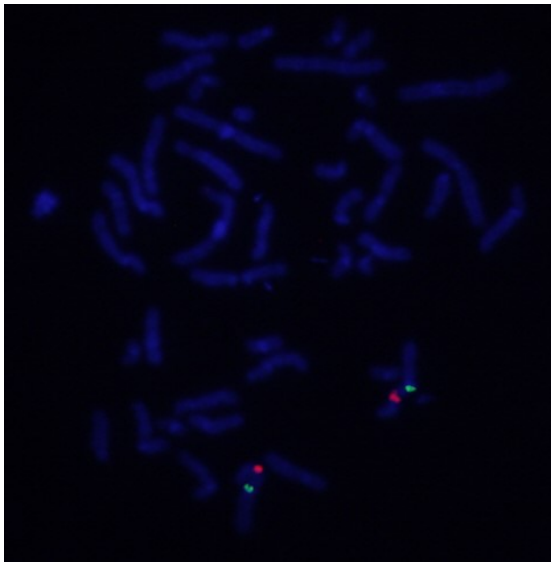
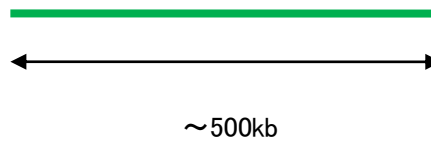
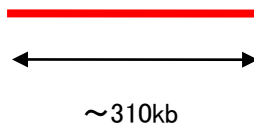
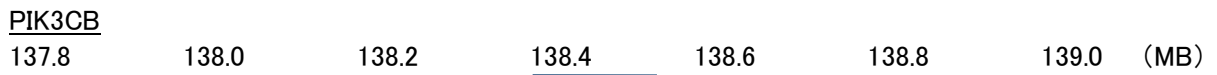


Probe PIK3CB/CEN3q Dual Color FISH Probe
Product No. GC122

PIK3CB
Probe Size Approximately 310kb
Fluorophore TexRed
Location 3q22.3
Also known as PI3K; PIK3C1; P110BETA; PI3KBETA

CEN3q
Probe Size Approximately 500kb
Fluorophore FITC
Location 3q12.1



Representative images of normal human cell (lymphocyte) stain with the dual color FISH probe. The left image is chromosomes at metaphase, and the right image is an interphase nucleus.