

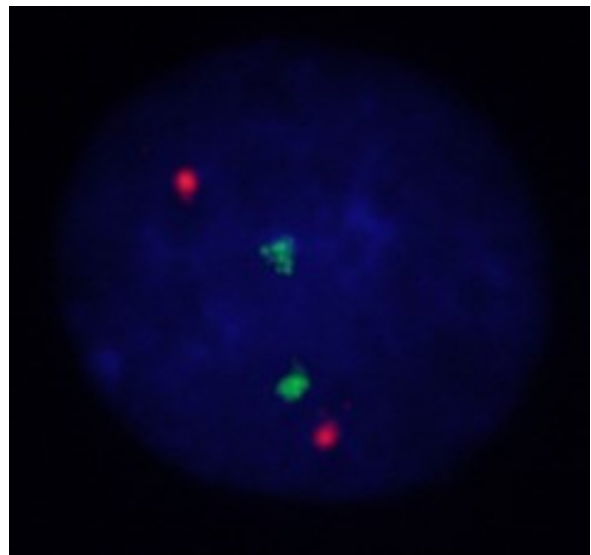
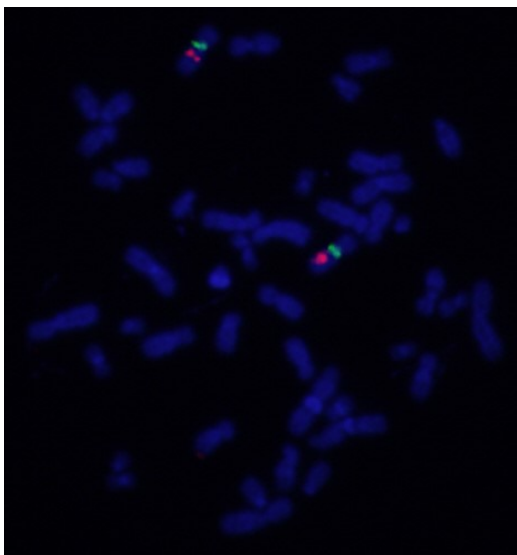
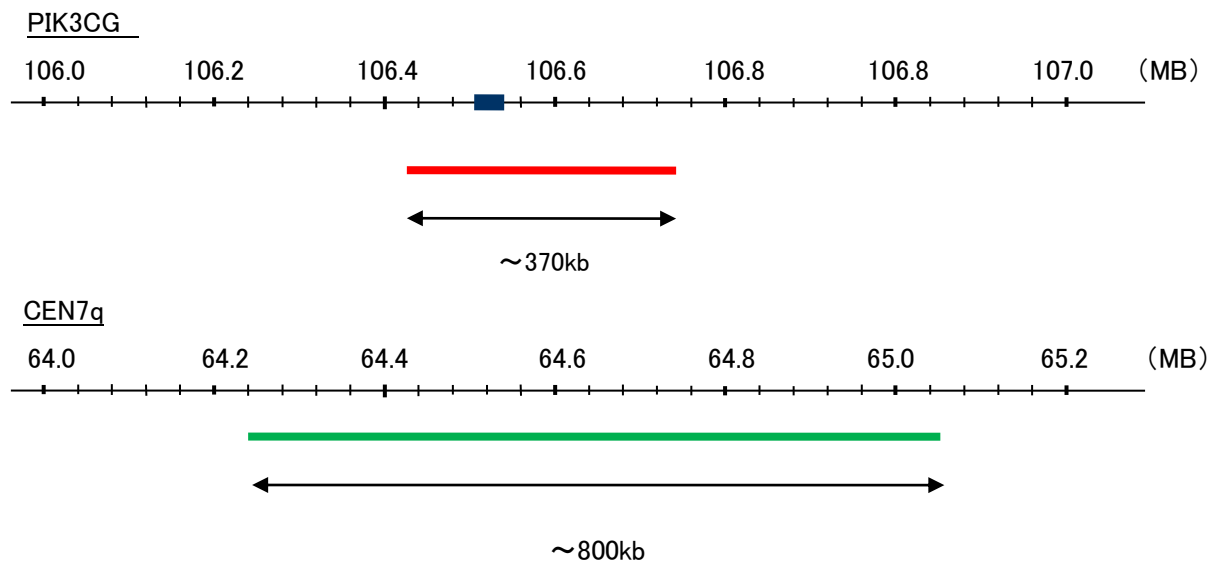
Probe PIK3CG/CEN7q Dual Color FISH Probe
Product No. GC123

PIK3CG

Probe Size Approximately 330kb
Fluorophore TexRed
Location 7q22.3
Also known as PI3K; PIK3; PI3CG; PI3Kgamma; p110gamma; p120-PI3K

CEN7q

Probe Size Approximately 800kb
Fluorophore FITC
Location 7q11.21



Representative images of normal human cell (lymphocyte) stain with the dual color FISH probe. The left image is chromosomes at metaphase, and the right image is an interphase nucleus.