

Probe TERT/CEN5q Dual Color FISH Probe  
Product No. GC124

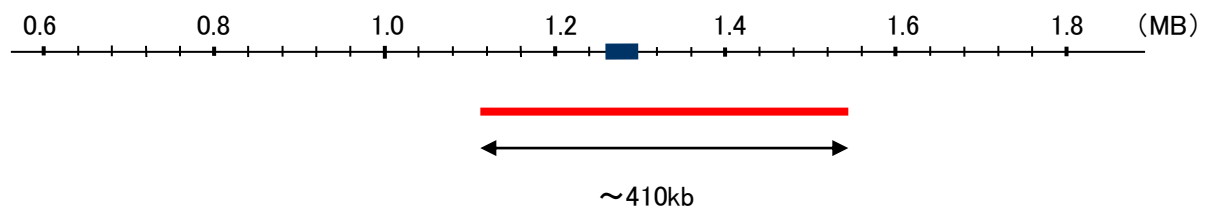
**TERT**

Probe Size Approximately 410kb  
Fluorophore TexRed  
Location 5p15.33  
Also known as TP2; TRT; CMM9; EST2; TCS1; hTRT; DKCA2; DKCB4; hEST2; PFBMFT1

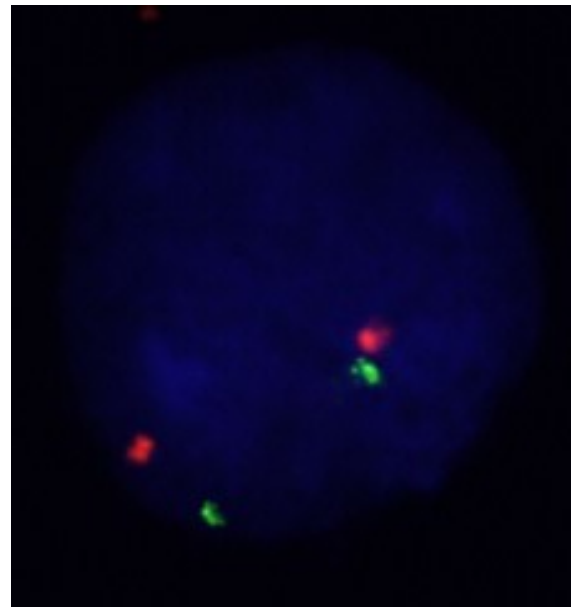
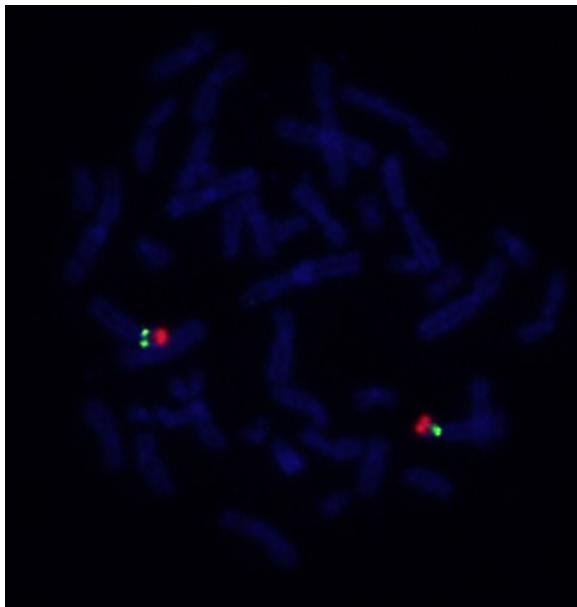
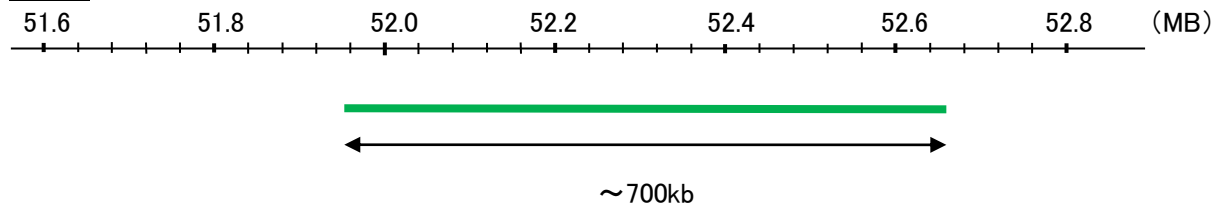
**CEN5q**

Probe Size Approximately 700kb  
Fluorophore FITC  
Location 5q11.2

TERT



CEN5q



Representative images of normal human cell (lymphocyte) stain with the dual color FISH probe. The left image is chromosomes at metaphase, and the right image is an interphase nucleus.