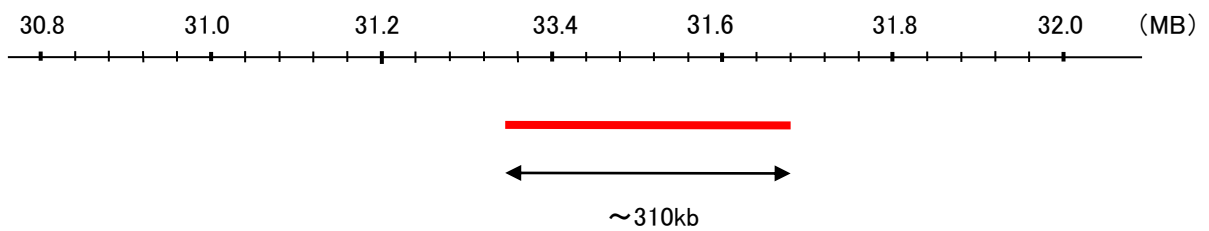


Probe 22q12.2/CEN22q Dual Color FISH Probe
Product No. GC125

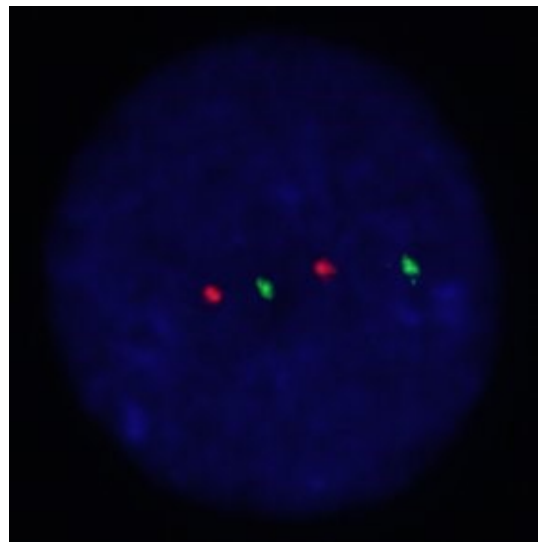
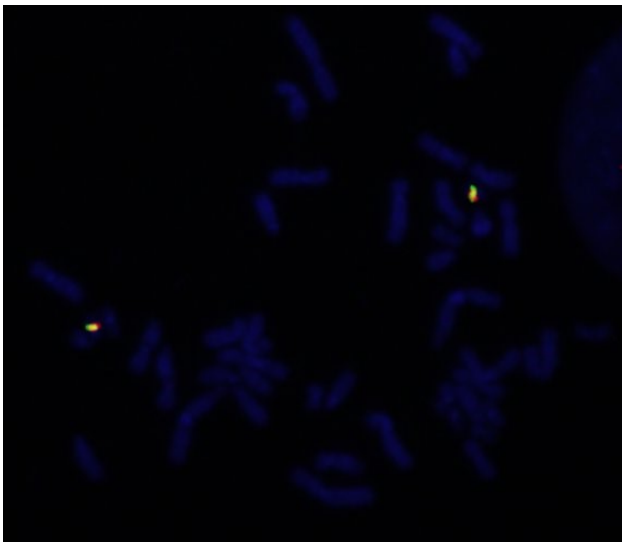
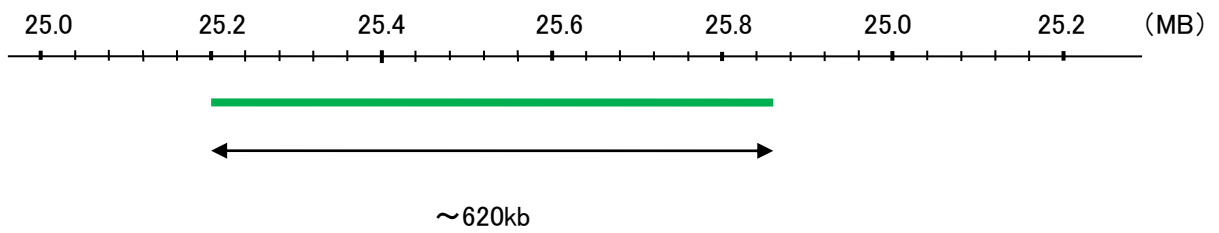
22q12.2
Probe Size Approximately 310kb
Fluorophore TexRed
Location 22q12.2

CEN22q
Probe Size Approximately 620kb
Fluorophore FITC
Location 22q11.22

22q12.2



CEN22q



Representative images of normal human cell (lymphocyte) stain with the dual color FISH probe. The left image is chromosomes at metaphase, and the right image is an interphase nucleus.