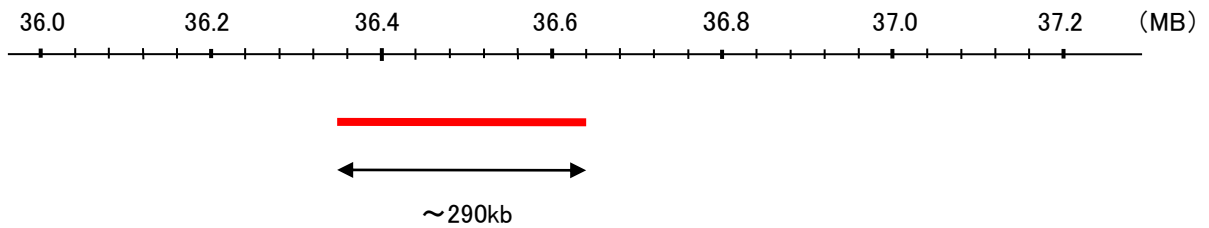


Probe 22q13.1/CEN22q Dual Color FISH Probe
Product No. GC127

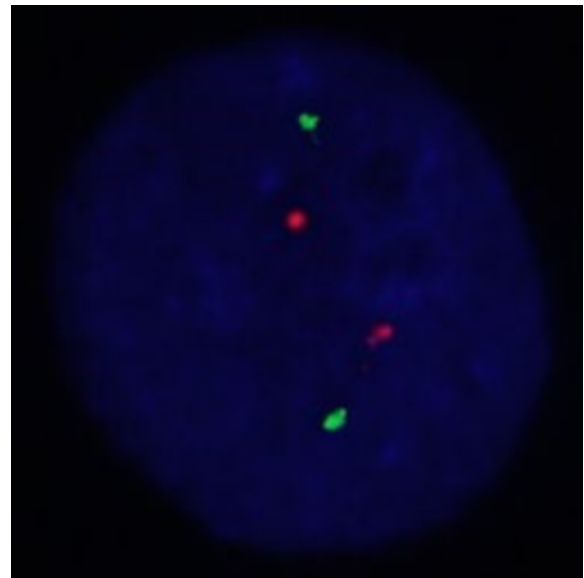
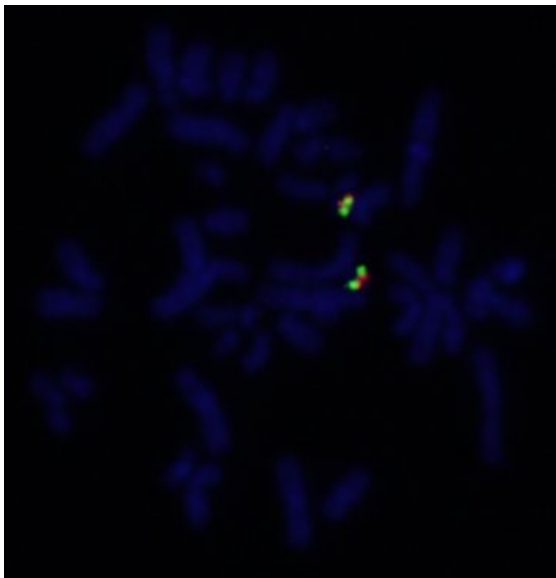
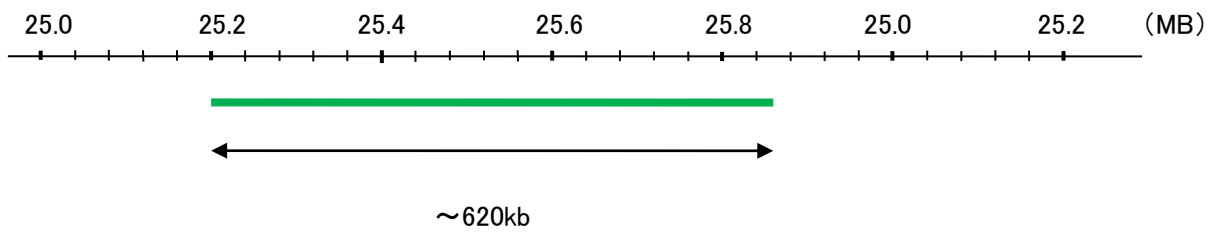
22q13.1
Probe Size Approximately 290kb
Fluorophore TexRed
Location 22q13.1

CEN22q
Probe Size Approximately 620kb
Fluorophore FITC
Location 22q11.22

22q12.2



CEN22q



Representative images of normal human cell (lymphocyte) stain with the dual color FISH probe. The left image is chromosomes at metaphase, and the right image is an interphase nucleus.