

Probe MLH1/CEN3q Dual Color FISH Probe
Product No. GC130

MLH1

Probe Size Approximately 290kb
Fluorophore TexRed
Location 3p21.3
Also known as FCC2; COCA2; HNPCC; hMLH1; HNPCC2

CEN3q

Probe Size Approximately 500kb
Fluorophore FITC
Location 3q12.1

MLH1

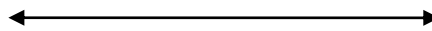
36.6 36.8 37.0 37.2 37.4 37.6 37.8 (MB)



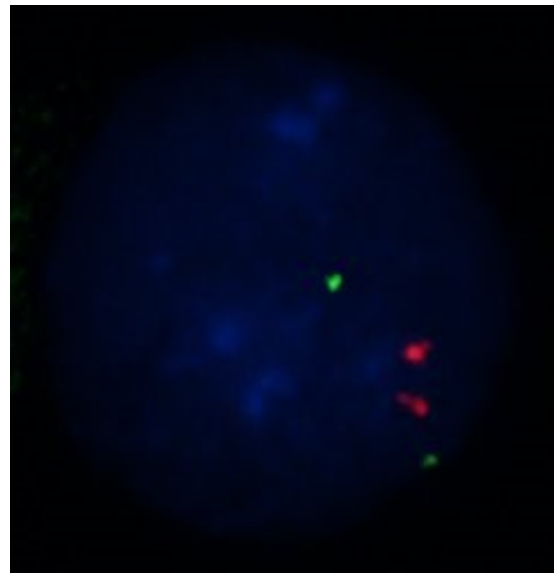
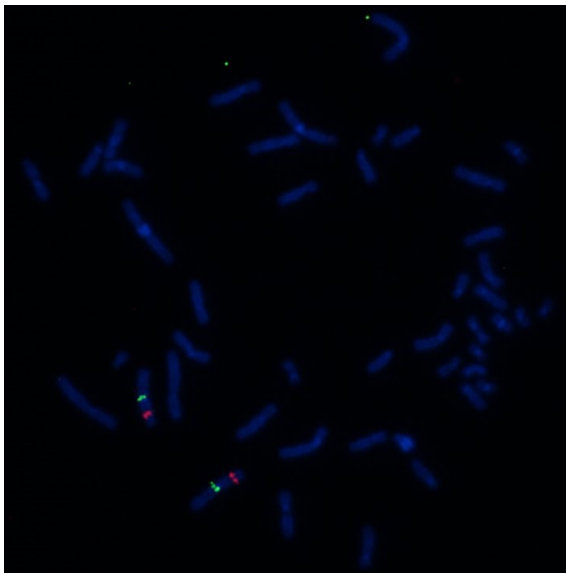
~290kb

CEN3q

95.0 95.2 95.4 95.6 95.8 96.0 96.2 (MB)



~500kb



Representative images of normal human cell (lymphocyte) stain with the dual color FISH probe. The left image is chromosomes at metaphase, and the right image is an interphase nucleus.