

Probe SFPQP1/CENYq FISH Probe
Product No. GC133

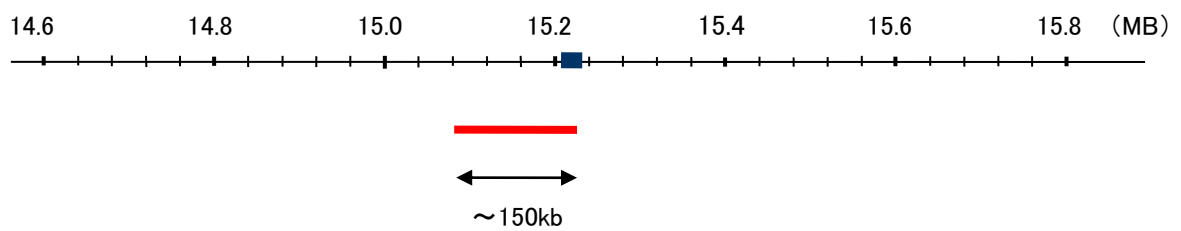
SFPQP1

Probe Size Approximately 150kb
Fluorophore TexRed
Location Yq11.2
Also known as SFPQP

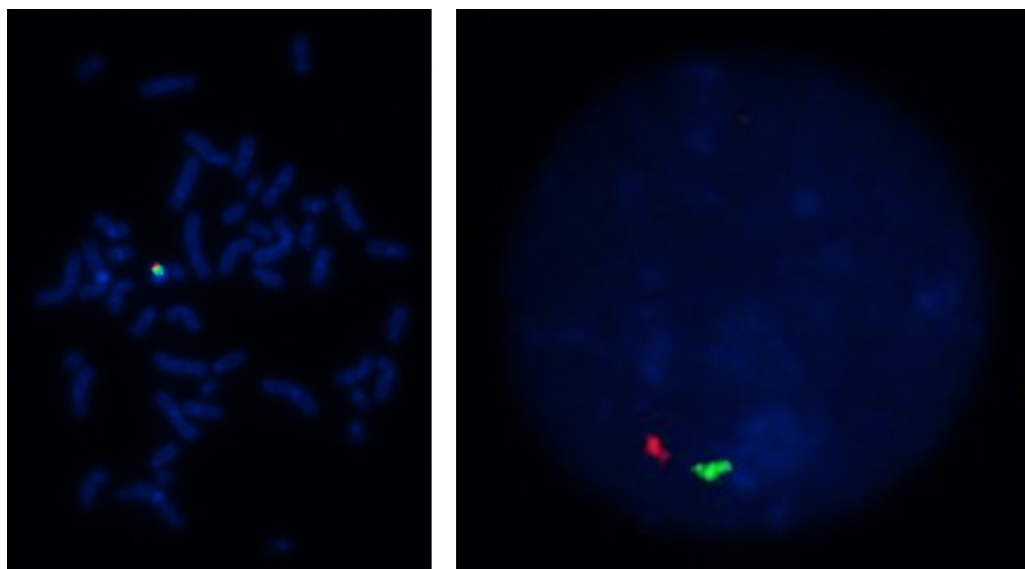
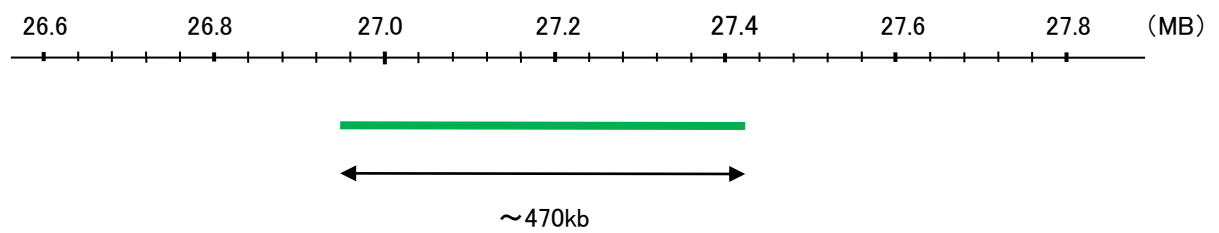
CENYq

Probe Size Approximately 470kb
Fluorophore TexRed
Location Yq11.221

SFPQP1



CENYq



Representative images of normal human cell (lymphocyte) stain with the dual color FISH probe. The left image is chromosomes at metaphase, and the right image is an interphase nucleus.