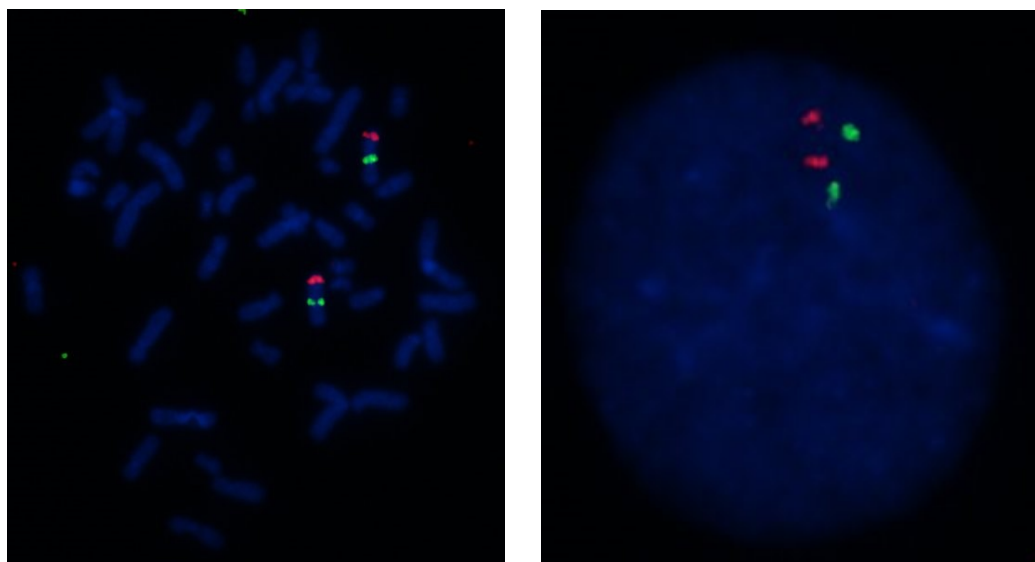
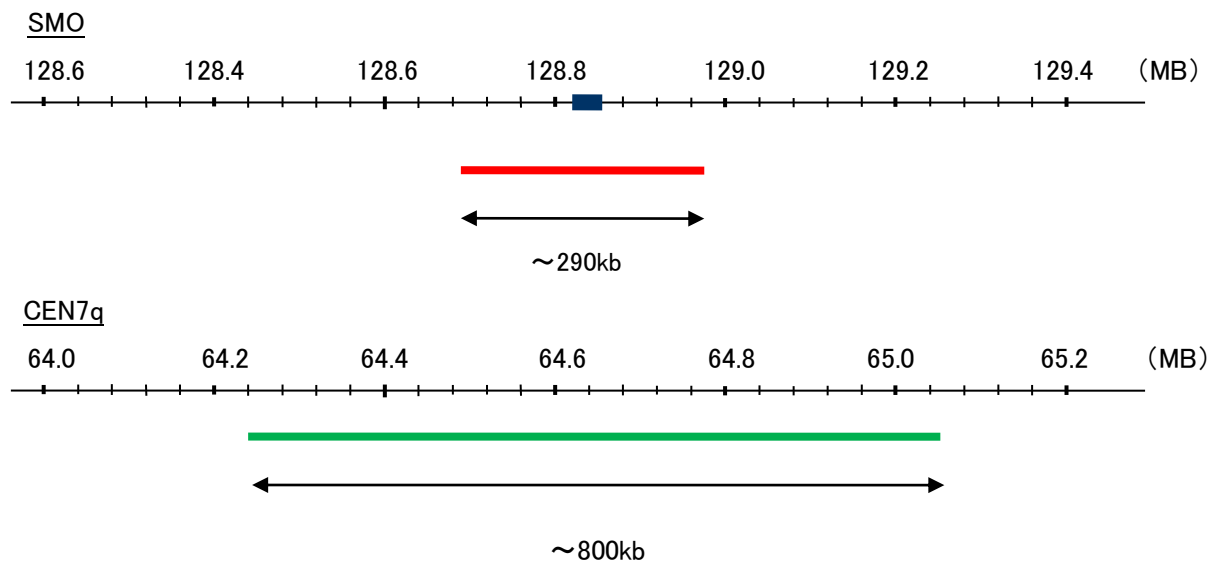


Probe SMO/CEN7q Dual Color FISH Probe
Product No. GC134

SMO
Probe Size Approximately 290kb
Fluorophore TexRed
Location 7q32.3
Also known as Gx; SMOH; FZD11

CEN7q
Probe Size Approximately 800kb
Fluorophore FITC
Location 7q11.21



Representative images of normal human cell (lymphocyte) stain with the dual color FISH probe. The left image is chromosomes at metaphase, and the right image is an interphase nucleus.