

Probe TAL1/CEN1p Dual Color FISH Probe
Product No. GC135

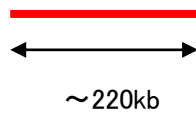
TAL1

Probe Size Approximately 220kb
Fluorophore TexRed
Location 1p32
Also known as SCL; TCL5; tal-1; bHLHa17

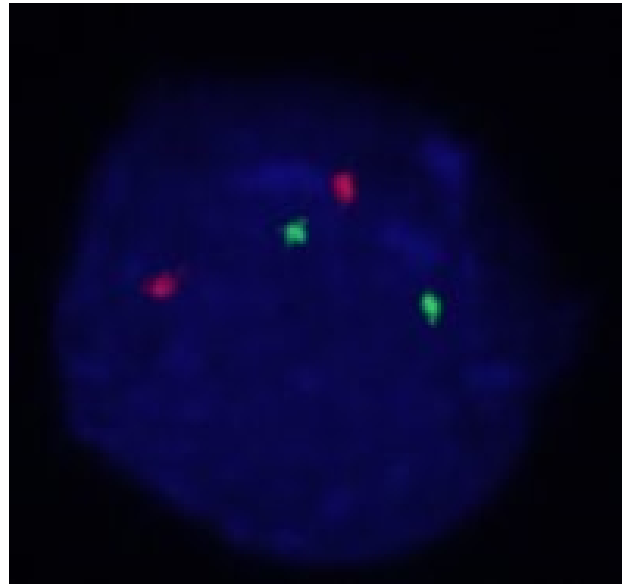
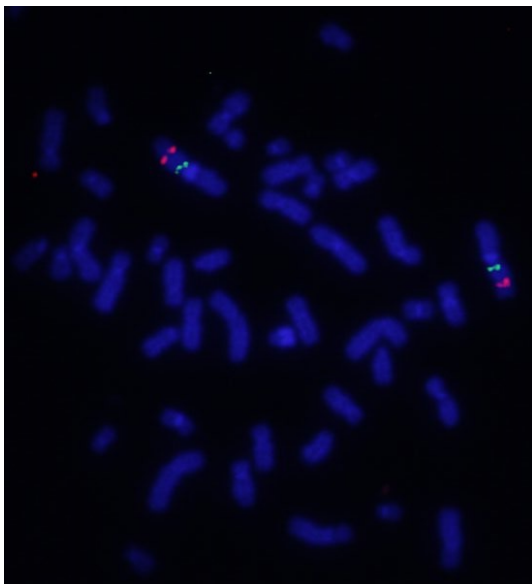
CEN1p

Probe Size Approximately 780kb
Fluorophore FITC
Location 1p13.3

TAL1



CEN1p



Representative images of normal human cell (lymphocyte) stain with the dual color FISH probe. The left image is chromosomes at metaphase, and the right image is an interphase nucleus.