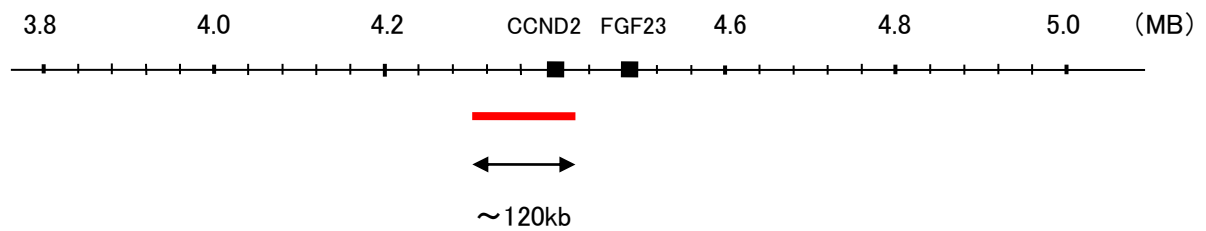


Probe CCND2/CEN12p Dual Color FISH Probe
Product No. GC136

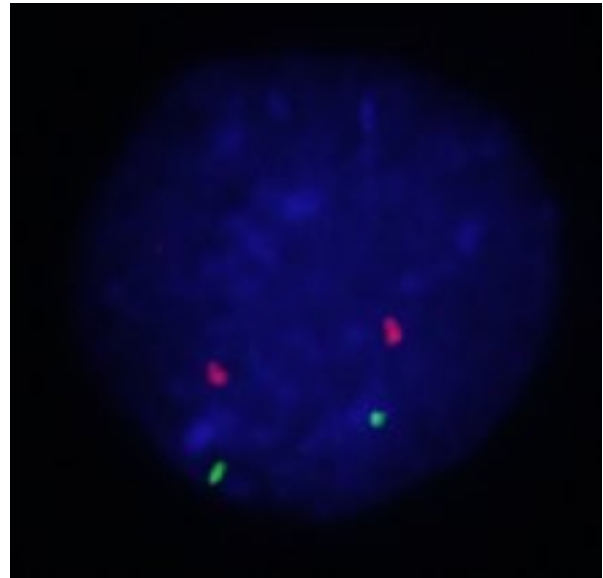
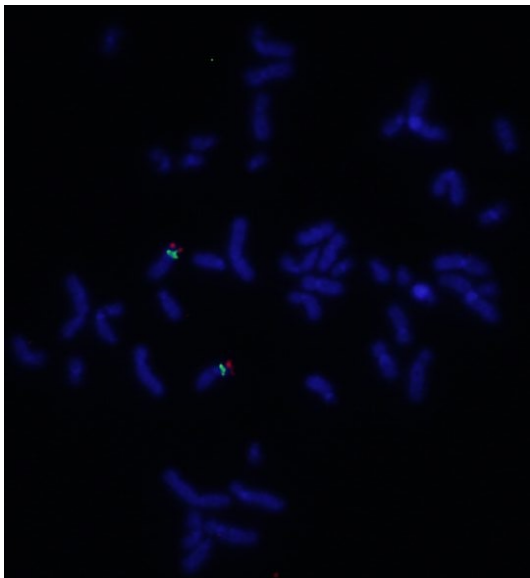
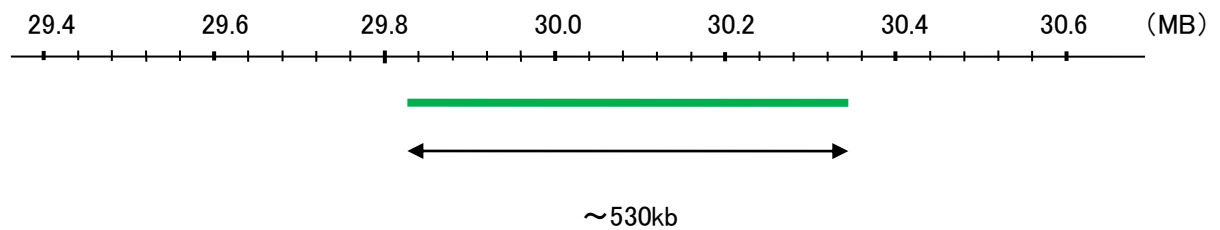
CCND2
Probe Size Approximately 120kb
Fluorophore TexRed
Location 12p13.32

CEN12p
Probe Size Approximately 530kb
Fluorophore FITC
Location 12p11.22

CCND2



CEN12p



Representative images of normal human cell (lymphocyte) stain with the dual color FISH probe. The left image is chromosomes at metaphase, and the right image is an interphase nucleus.