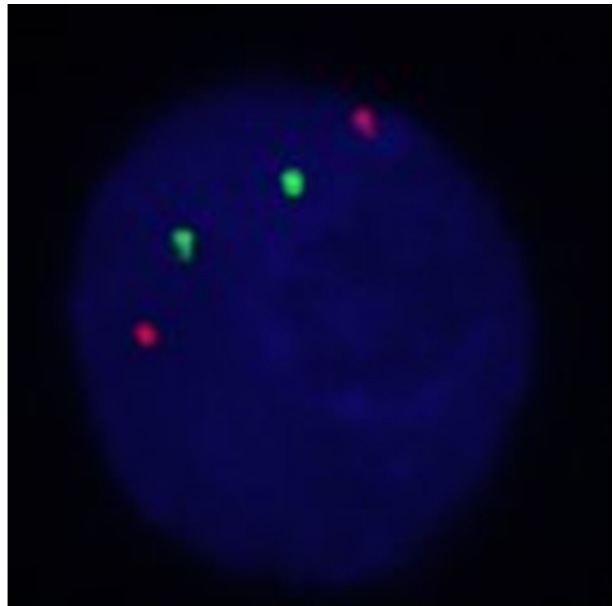
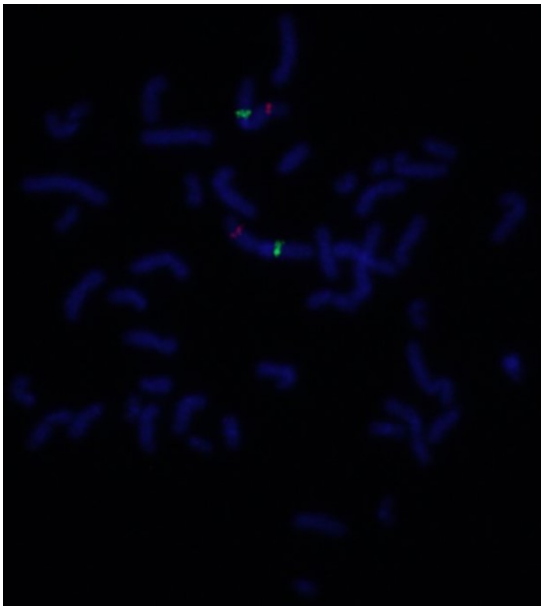
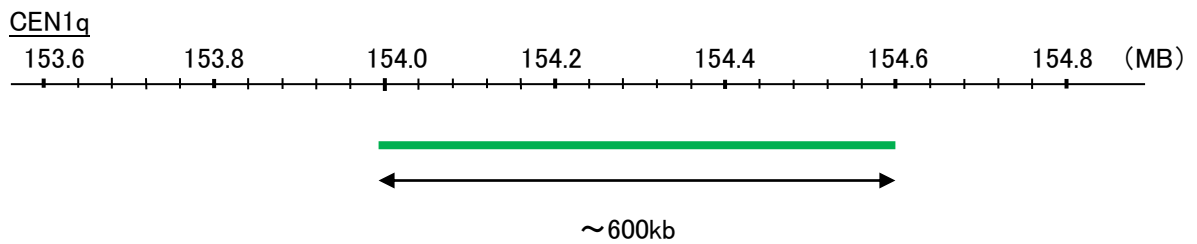
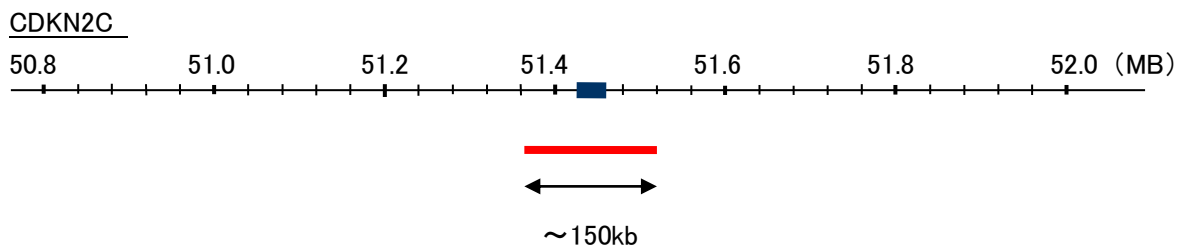


Probe CDKN2C/CEN1q Dual Color FISH Probe
Product No. GC137

CDKN2C
Probe Size Approximately 150kb
Fluorophore TexRed
Location 1p32.3
Also known as p18; INK4C; p18-INK4C

CEN1q
Probe Size Approximately 600kb
Fluorophore FITC
Location 1q21.3



Representative images of normal human cell (lymphocyte) stain with the dual color FISH probe. The left image is chromosomes at metaphase, and the right image is an interphase nucleus.