

Probe AHCYL1/CEN1q Dual Color FISH Probe
Product No. GC138

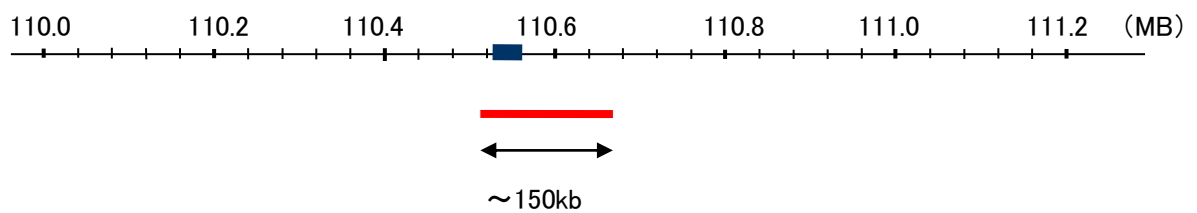
AHCYL1

Probe Size Approximately 150kb
Fluorophore TexRed
Location 1p13
Also known as DCAL; IRBIT; PPP1R78; PRO0233; XPVKONA

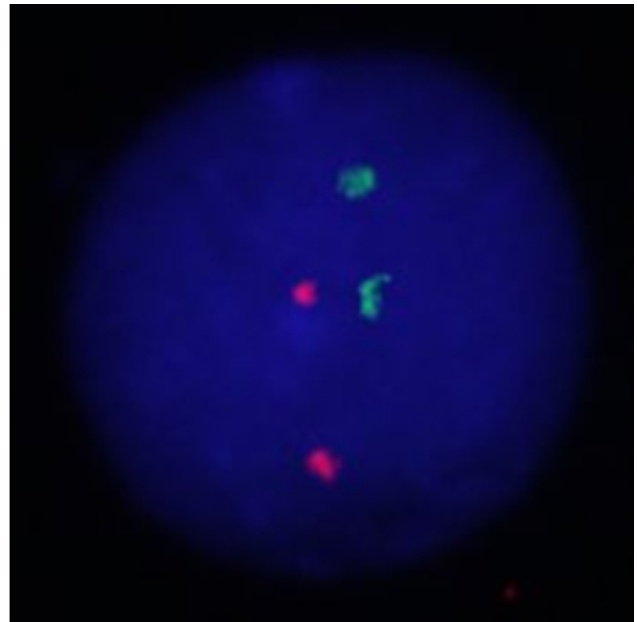
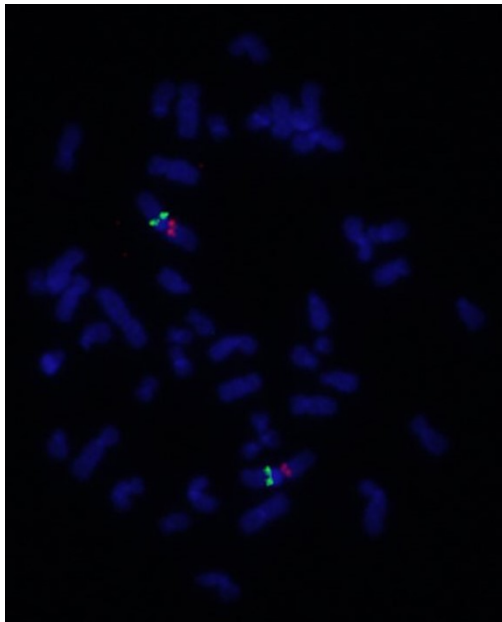
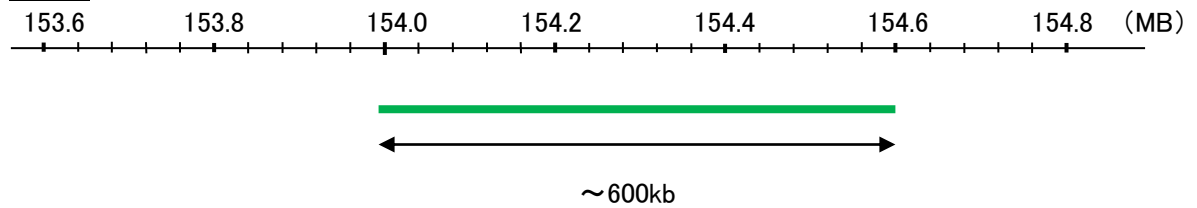
CEN1q

Probe Size Approximately 600kb
Fluorophore FITC
Location 1q21.3

AHCYL1



CEN1q



Representative images of normal human cell (lymphocyte) stain with the dual color FISH probe. The left image is chromosomes at metaphase, and the right image is an interphase nucleus.