

Probe FOSL1/GEN11p Dual Color FISH Probe
Product No. GC139

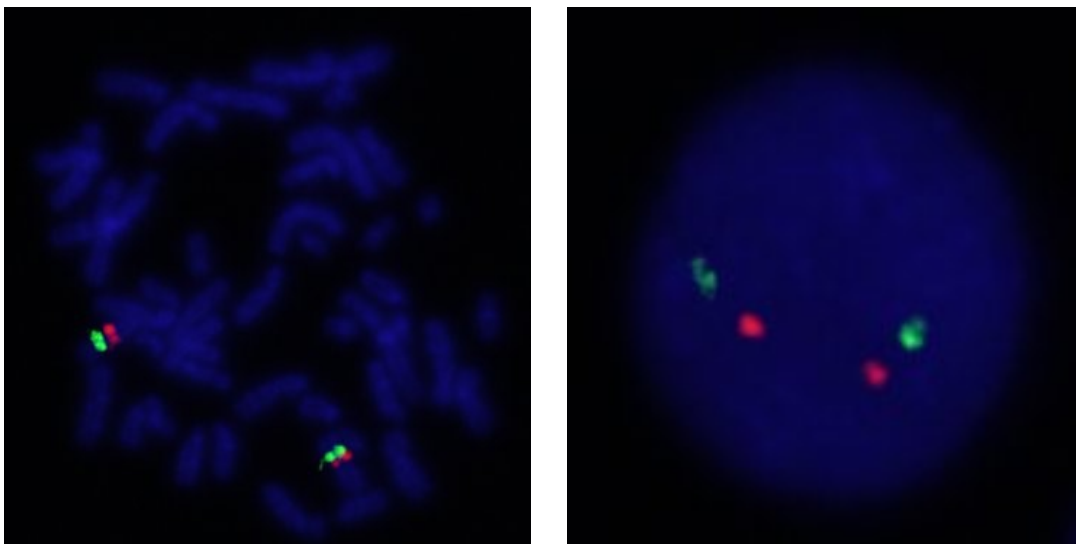
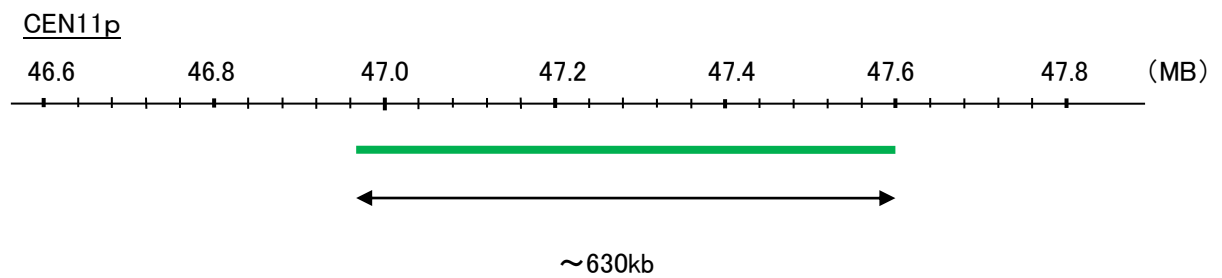
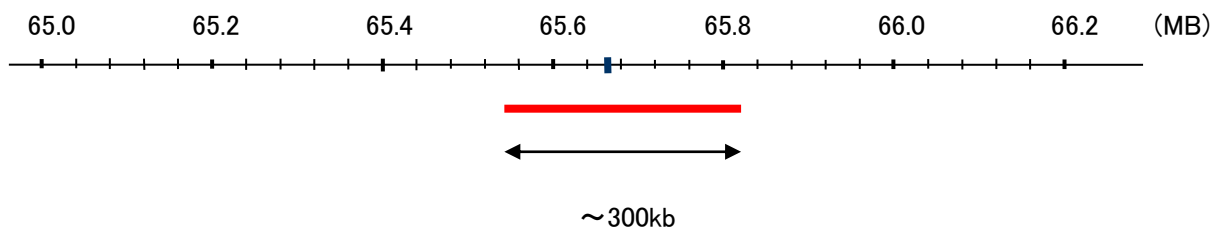
FOSL1

Probe Size Approximately 300kb
Fluorophore TexRed
Location 11q13.1
Also known as FRA; FRA1; fra-1

CEN11p

Probe Size Approximately 630kb
Fluorophore FITC
Location 11p11.12

FOSL1



Representative images of normal human cell (lymphocyte) stain with the dual color FISH probe. The left image is chromosomes at metaphase, and the right image is an interphase nucleus.