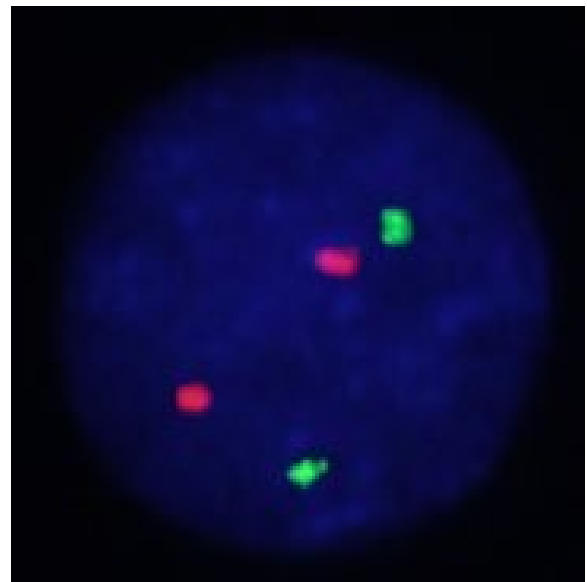
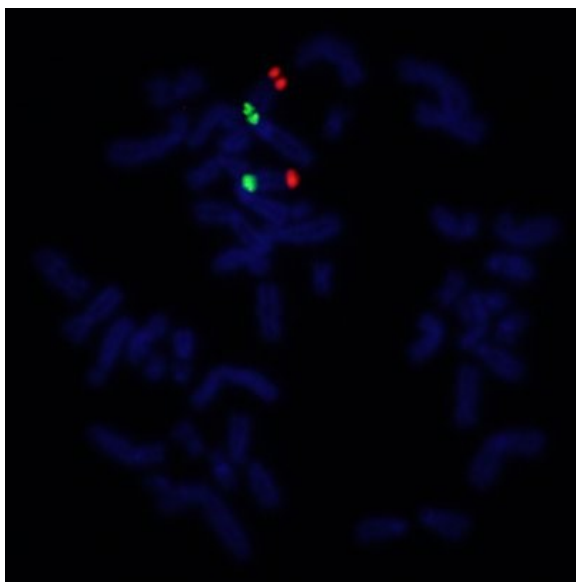
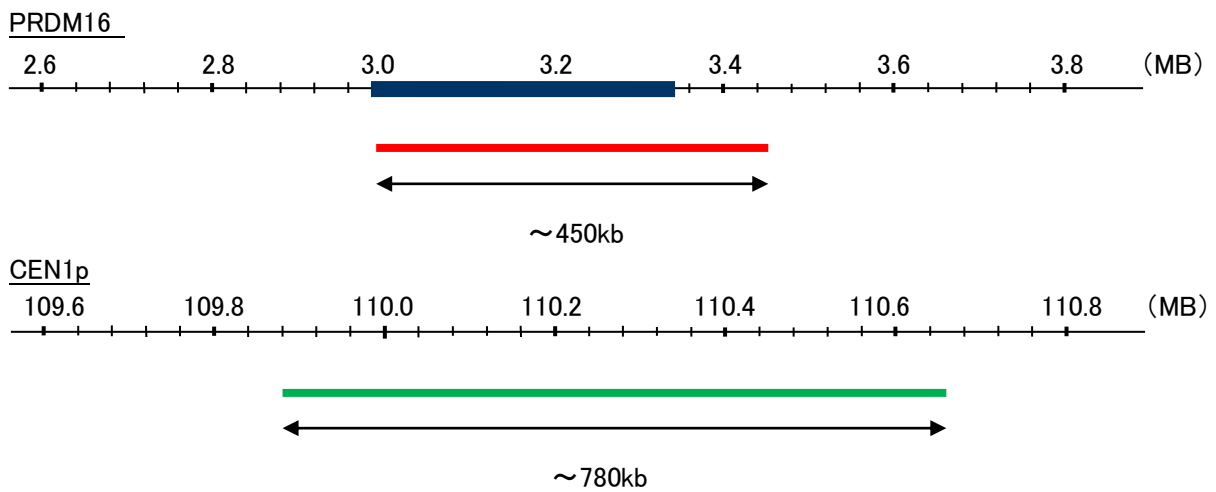


Probe PRDM16/CEN1p Dual Color FISH Probe  
Product No. GC142

**PRDM16**  
Probe Size Approximately 450kb  
Fluorophore TexRed  
Location 1p36.23-33  
Also known as MEL1; LVNC8; PFM13; CMD1LL

**CEN1p**  
Probe Size Approximately 780kb  
Fluorophore FITC  
Location 1p13.3



Representative images of normal human cell (lymphocyte) stain with the dual color FISH probe. The left image is chromosomes at metaphase, and the right image is an interphase nucleus.