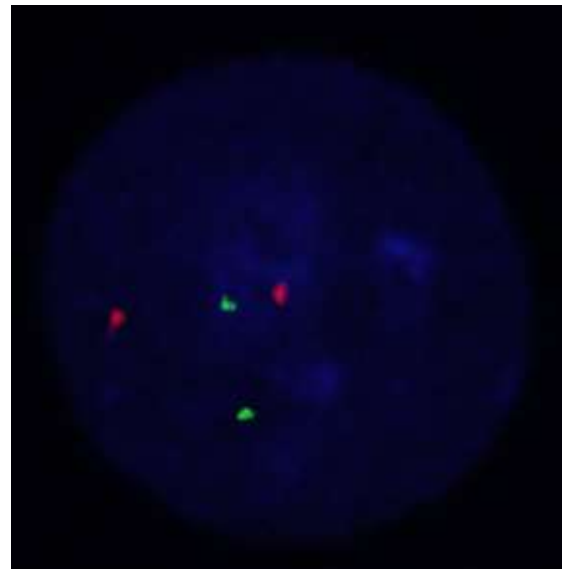
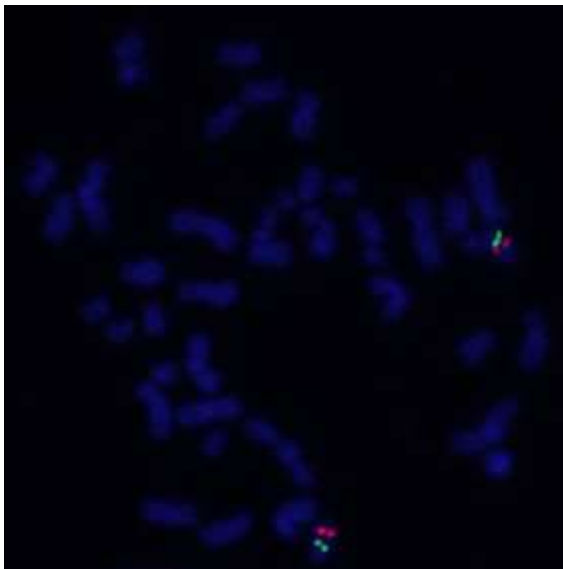
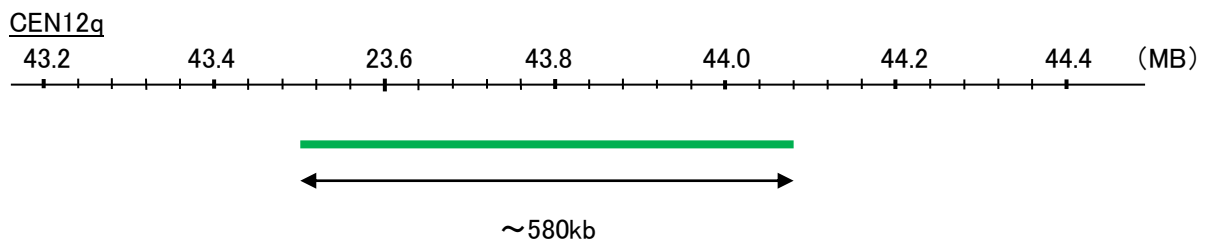
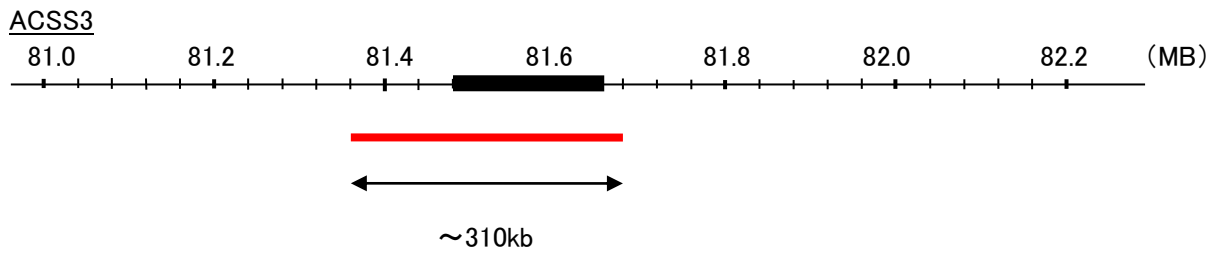


Probe ACSS3/CEN12q FISH Probe  
Product No. GC145

ACSS3  
Probe Size Approximately 310kb  
Fluorophore TexRed  
Location 12q21.31

CEN12q  
Probe Size Approximately 580kb  
Fluorophore FITC  
Location 12q12



Representative images of normal human cell (lymphocyte) stain with the dual color FISH probe. The left image is chromosomes at metaphase, and the right image is an interphase nucleus.