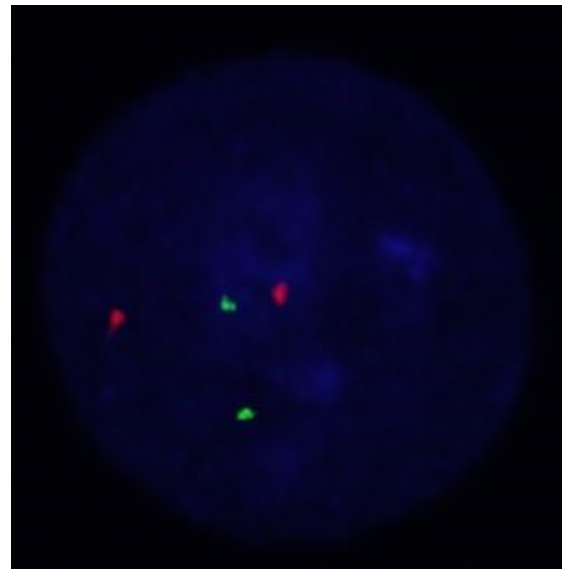
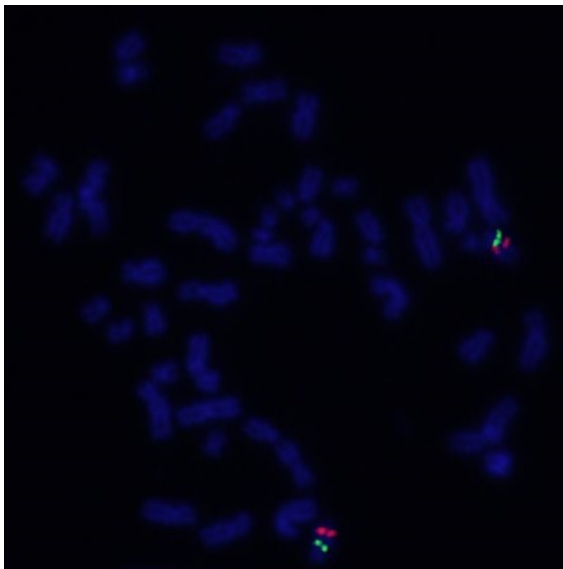
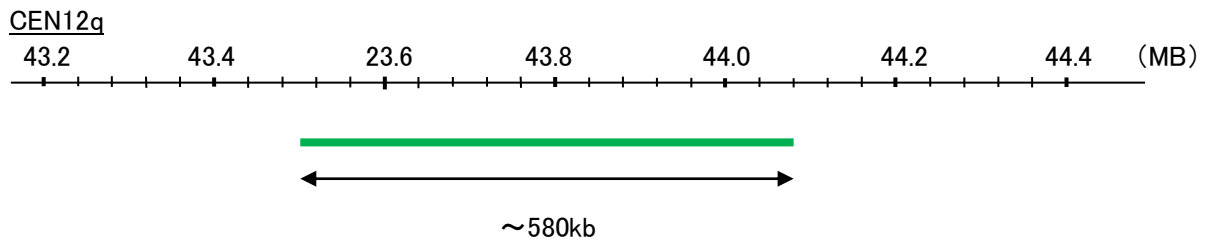
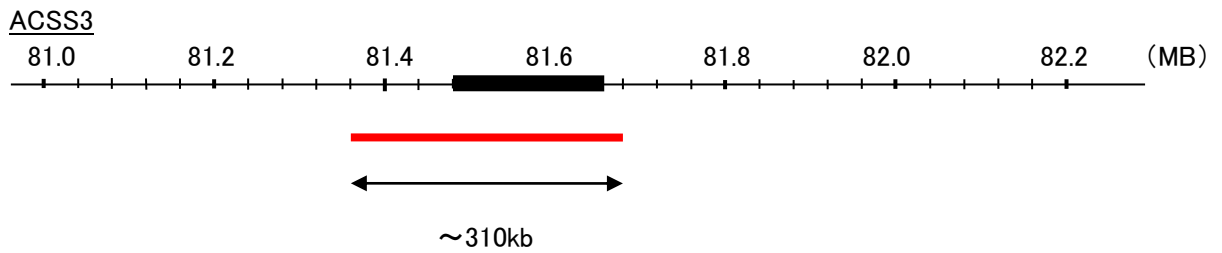


Probe ACSS3/CEN12q FISH Probe
Product No. GC145

ACSS3
Probe Size Approximately 310kb
Fluorophore TexRed
Location 12q21.31

CEN12q
Probe Size Approximately 580kb
Fluorophore FITC
Location 12q12



Representative images of normal human cell (lymphocyte) stain with the dual color FISH probe. The left image is chromosomes at metaphase, and the right image is an interphase nucleus.