

Probe PAK1/CEN11p Dual Color FISH Probe  
Product No. GC146

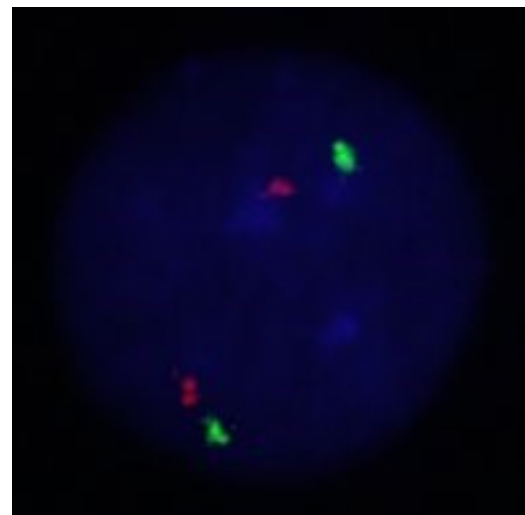
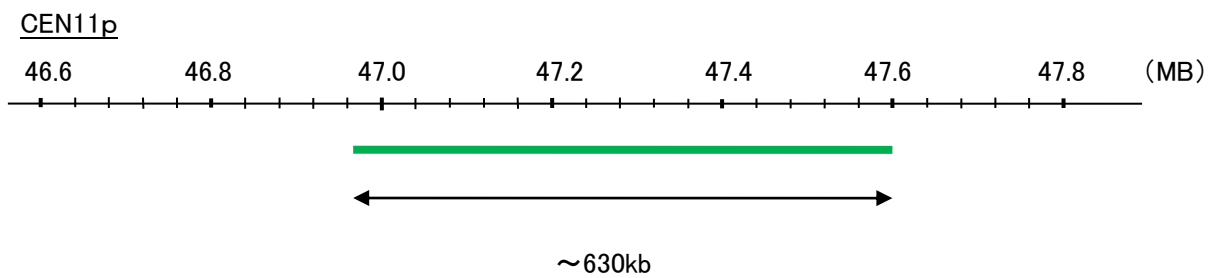
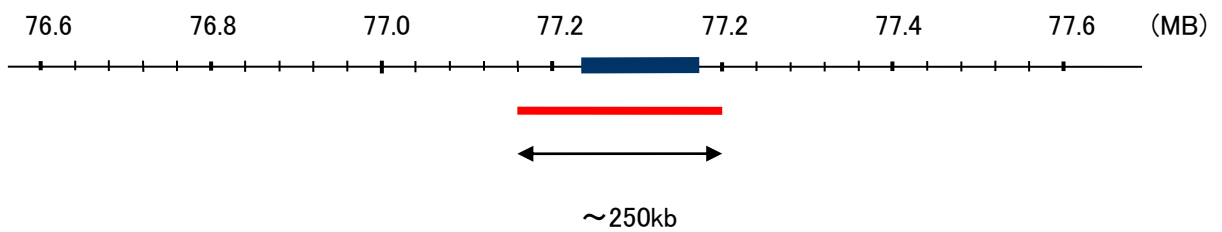
PAK1

Probe Size Approximately 250kb  
Fluorophore TexRed  
Location 11q13  
Also known as PAKalpha

CEN11p

Probe Size Approximately 630kb  
Fluorophore FITC  
Location 11p11.12

PAK1



Representative images of normal human cell (lymphocyte) stain with the dual color FISH probe. The left image is chromosomes at metaphase, and the right image is an interphase nucleus.