

Probe HER2/TOP2A/CEN17q TriColor FISH Probe
Product No. GC182

HER2

Probe Size Approximately 220kb
Fluorophore TexRed
Location 17q12
Also known as NEU; NGL; ERBB2; TKR1; CD340; HER-2; MLN 19; HER-2/neu

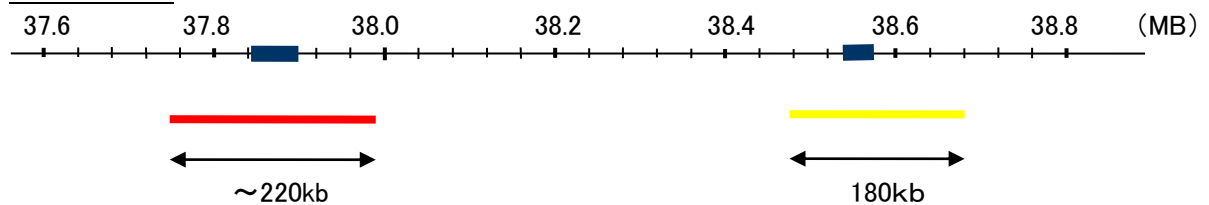
TOP2A

Probe Size Approximately 180kb
Fluorophore R6G
Location 17q21
Also known as TOP2; TP2A

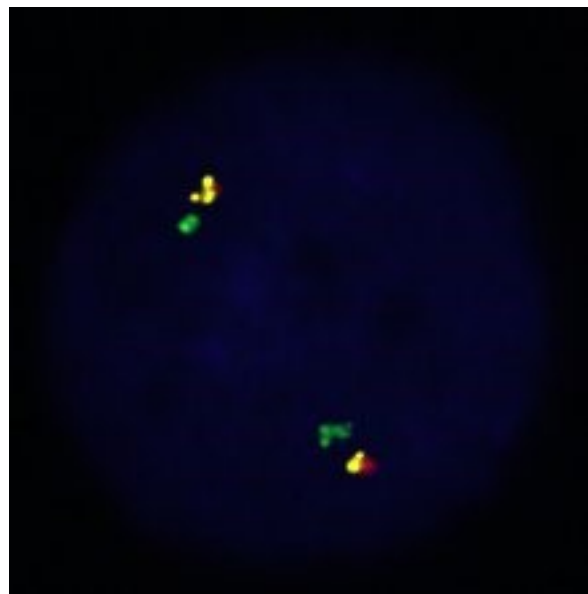
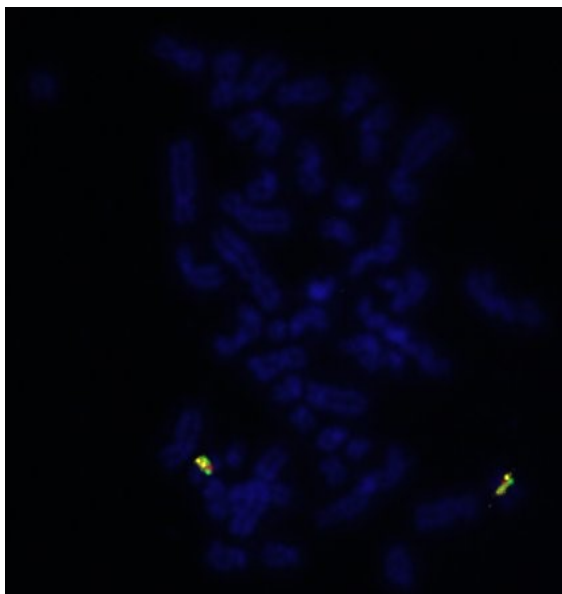
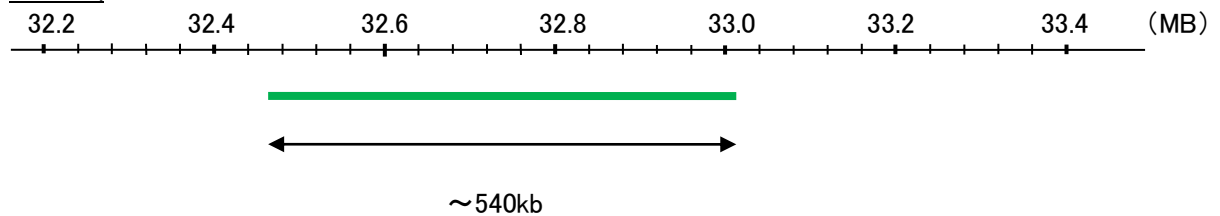
CEN17q

Probe Size Approximately 540kb
Fluorophore FITC
Location 17q11.2

HER2/TOP2A



CEN17q



Representative images of normal human cell (lymphocyte) stain with the dual color FISH probe. The left image is chromosomes at metaphase, and the right image is an interphase nucleus.