

Probe WDFY2/CEN13q Dual Color FISH Probe
Product No. GC150

WDFY2

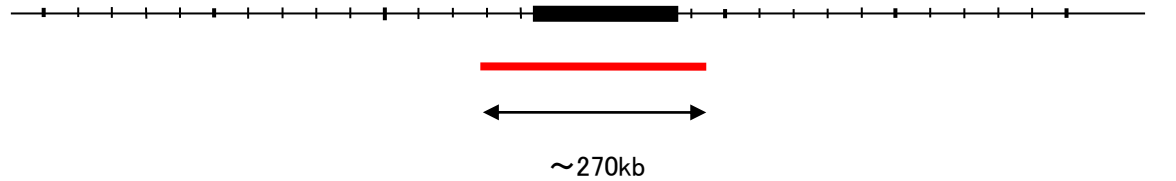
Probe Size Approximately 270kb
Fluorophore TexRed
Location 13q14.3
Also known as PROF; WDF2; ZFYVE22

CEN13q

Probe Size Approximately 550kb
Fluorophore FITC
Location 13q12.11

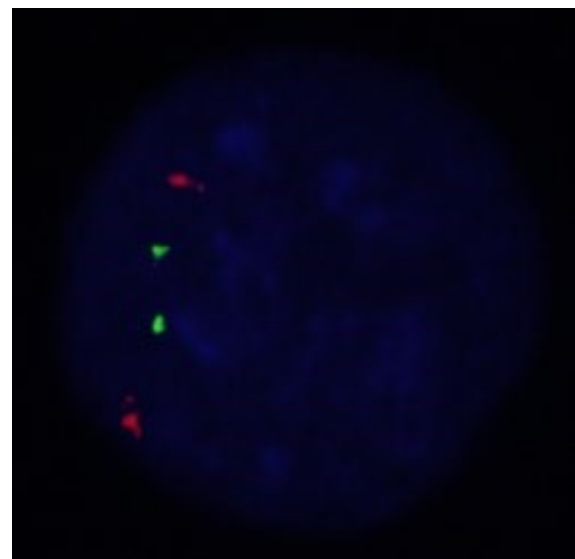
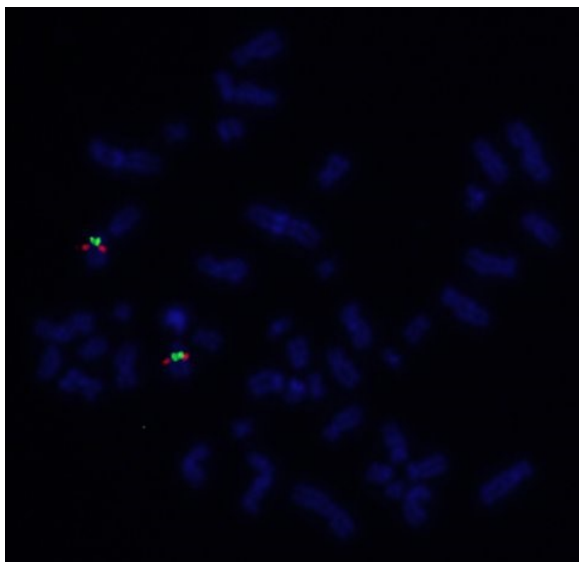
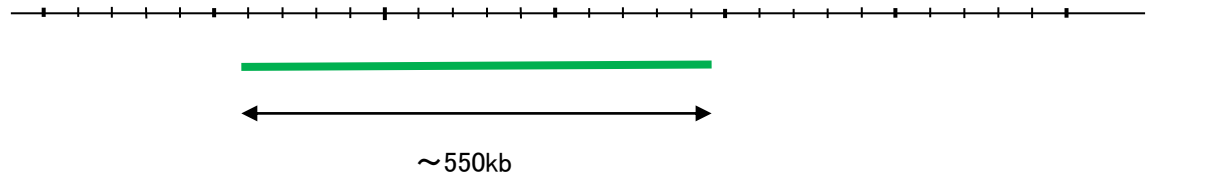
WDFY2

51.6 51.8 52.0 52.2 52.4 52.6 52.8 (MB)



CEN13q

27.4 27.6 27.8 28.0 28.2 28.4 28.6 (MB)



Representative images of normal human cell (lymphocyte) stain with the dual color FISH probe. The left image is chromosomes at metaphase, and the right image is an interphase nucleus.