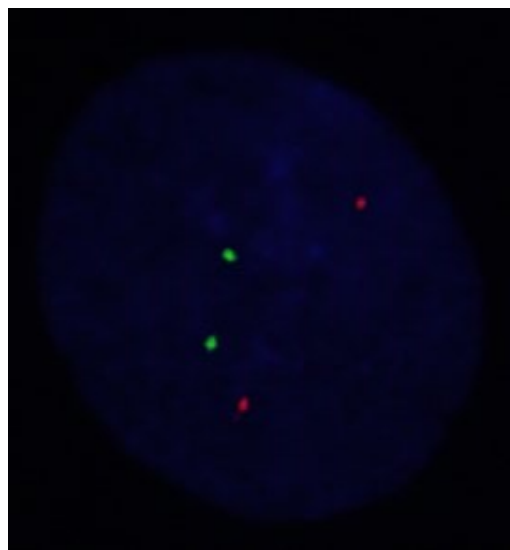
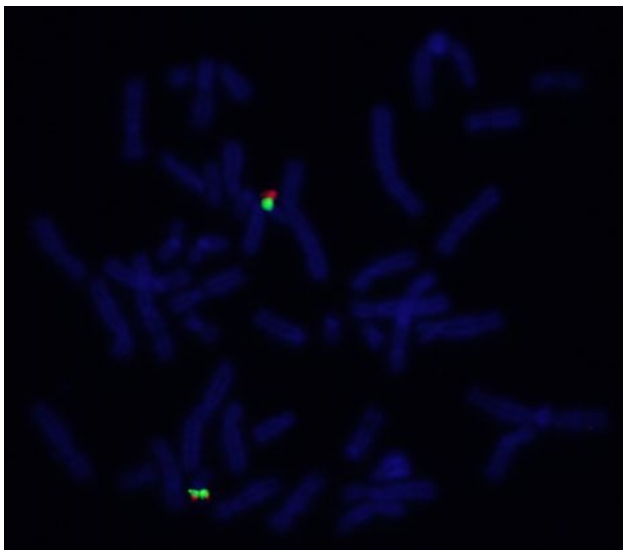
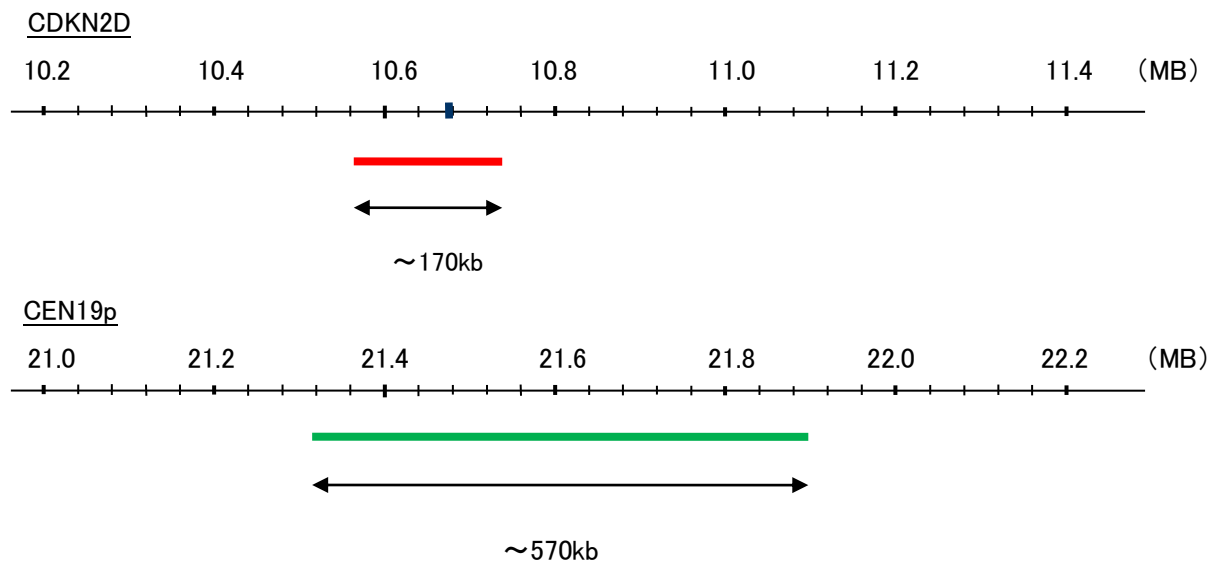


Probe CDKN2D/CEN19p FISH Probe
Product No. GC151

CDKN2D
Probe Size Approximately 170kb
Fluorophore TexRed
Location 19p13.2
Also known as p19; INK4D; p19-INK4D

CEN19p
Probe Size Apporoximately 570kb
Fluorophore FITC
Location 19p13.11



Representative images of normal human cell (lymphocyte) stain with the dual color FISH probe. The left image is chromosomes at metaphase, and the right image is an interphase nucleus.