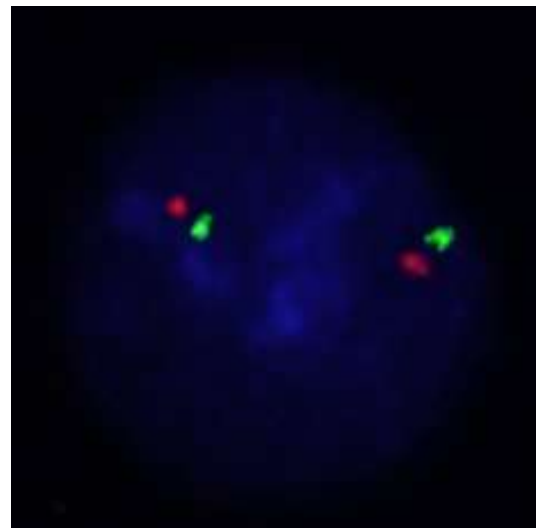
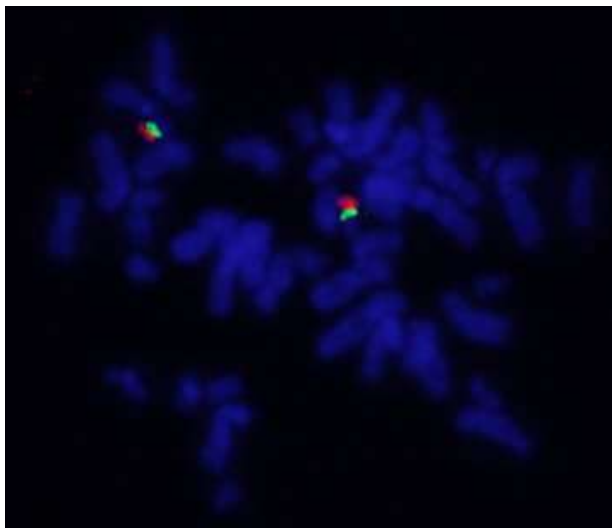
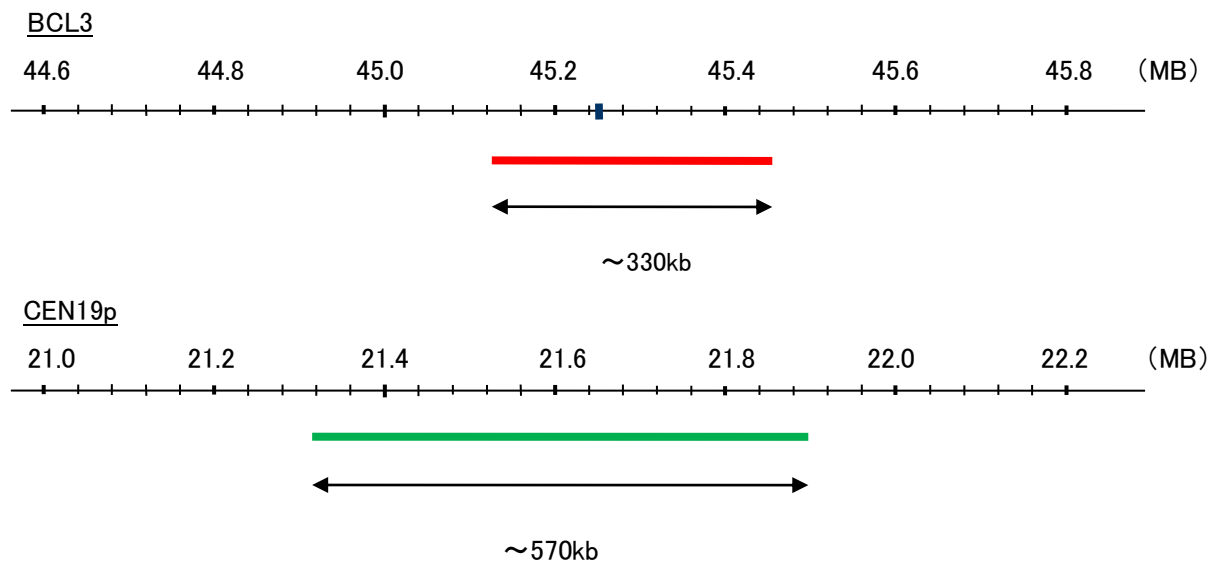


Probe BCL3/CEN19p FISH Probe
Product No. GC152

BCL3
Probe Size Approximately 330kb
Fluorophore TexRed
Location 19q13.3
Also known as BCL4; D19S37

CEN19p
Probe Size Apporoximately 570kb
Fluorophore FITC
Location 19p12



Representative images of normal human cell (lymphocyte) stain with the dual color FISH probe. The left image is chromosomes at metaphase, and the right image is an interphase nucleus.