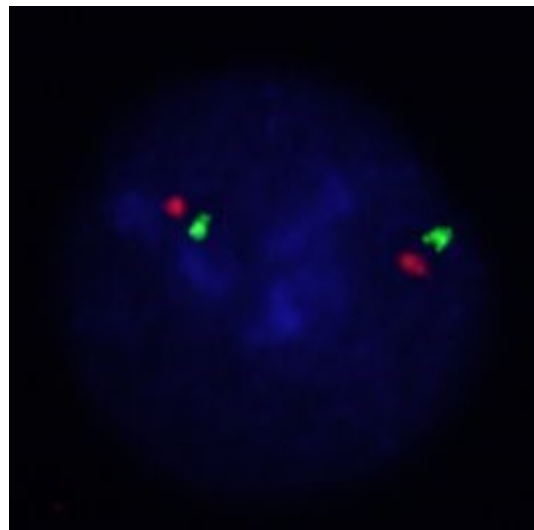
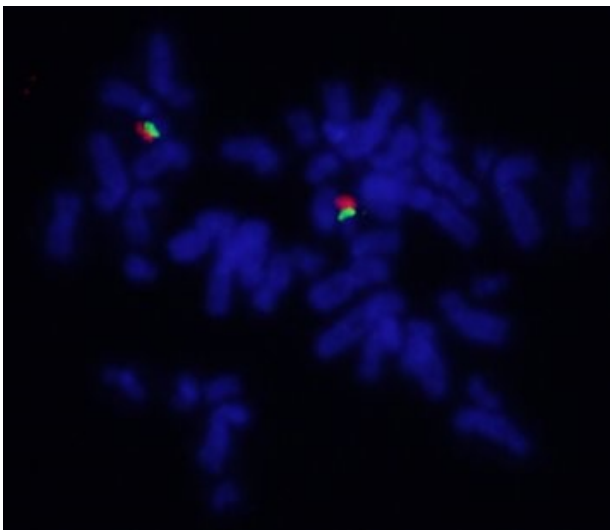
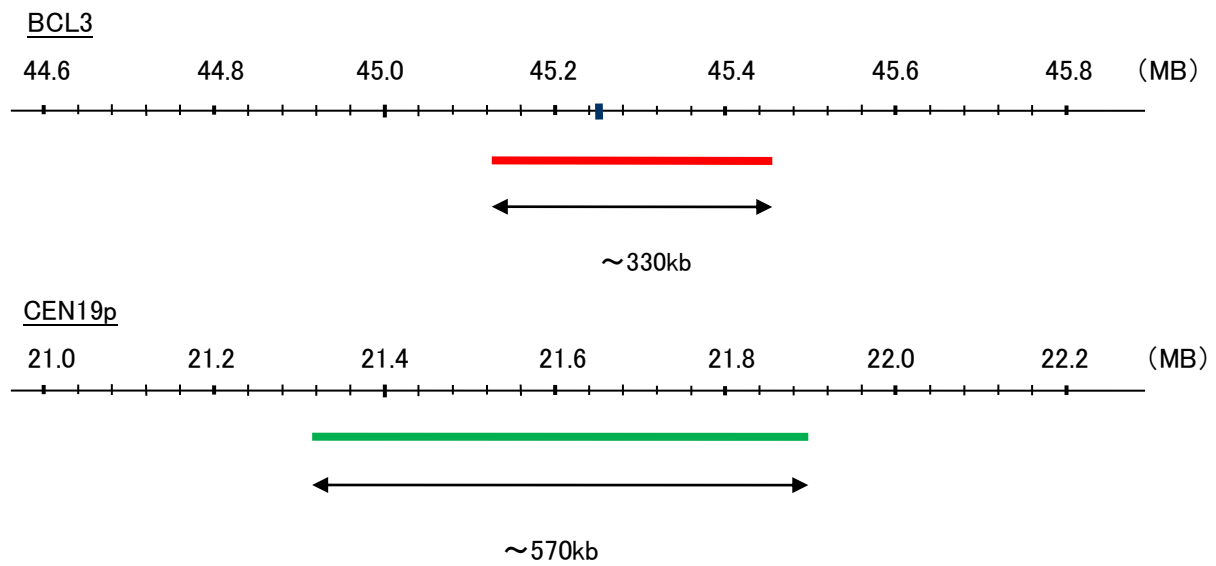


Probe BCL3/CEN19p FISH Probe  
Product No. GC152

**BCL3**  
Probe Size Approximately 330kb  
Fluorophore TexRed  
Location 19q13.3  
Also known as BCL4; D19S37

**CEN19p**  
Probe Size Apporoximately 570kb  
Fluorophore FITC  
Location 19p13.11



Representative images of normal human cell (lymphocyte) stain with the dual color FISH probe. The left image is chromosomes at metaphase, and the right image is an interphase nucleus.