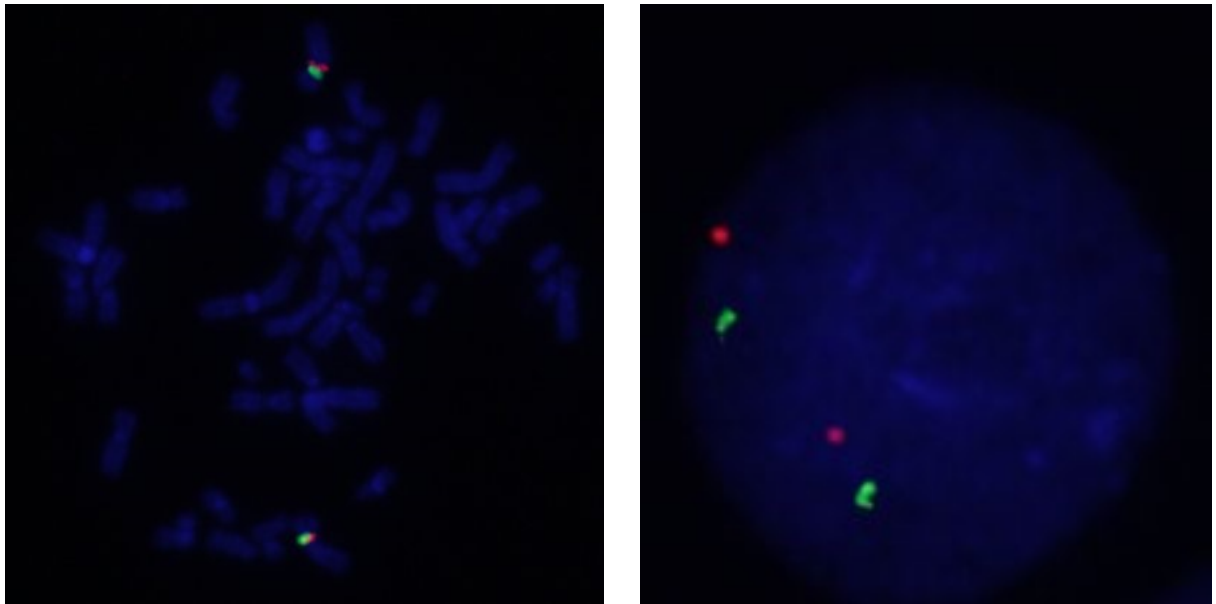
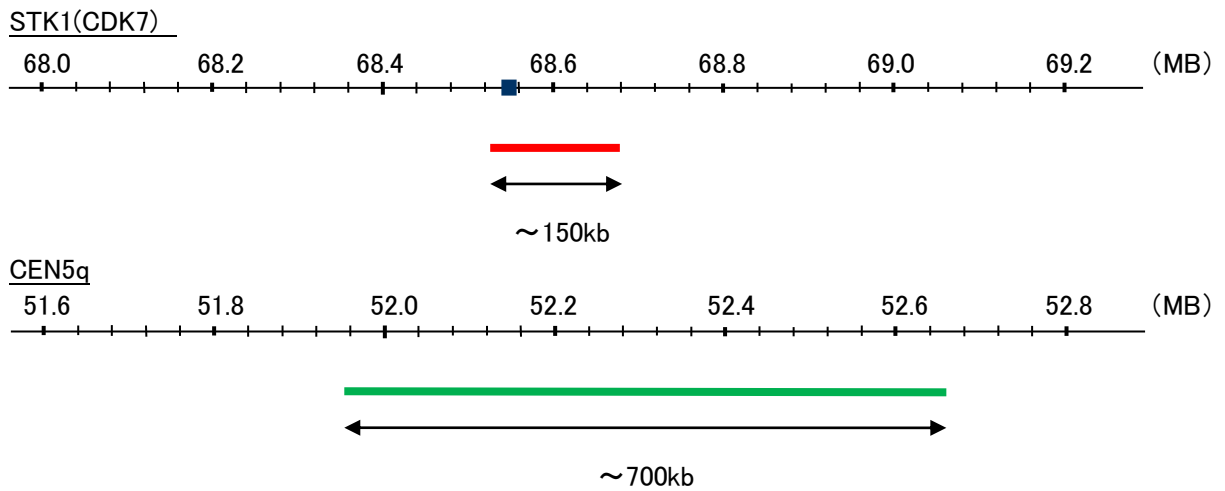


Probe STK1(CDK7)/CEN5q Dual Color FISH Probe
Product No. GC155

STK1(CDK7)
Probe Size Approximately 150kb
Fluorophore TexRed
Location 5q13.2
Also known as CAK1; HCAK; MO15; CDKN7; p39MO15

CEN5q
Probe Size Approximately 700kb
Fluorophore FITC
Location 5q11.2



Representative images of normal human cell (lymphocyte) stain with the dual color FISH probe. The left image is chromosomes at metaphase, and the right image is an interphase nucleus.