

Probe CCND1•FGF19/CEN11p Dual Color FISH Probe  
Product No. GC159

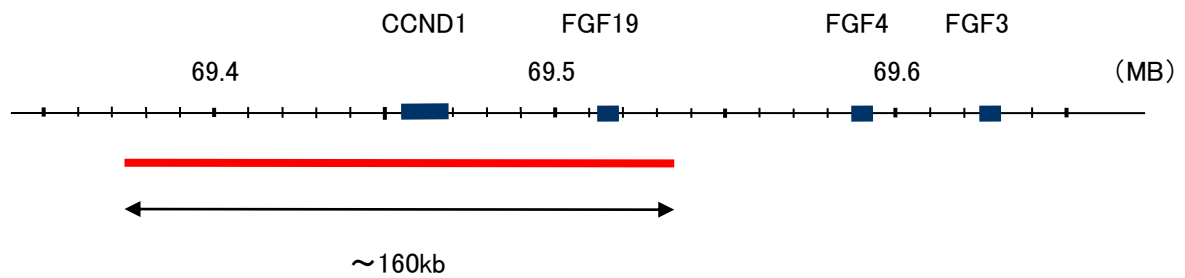
CCND1•FGF19

Probe Size Approximately 160kb  
Fluorophore TexRed  
Location 11q13.1  
Also known as BCL1; PRAD1; U21B31; D11S287E

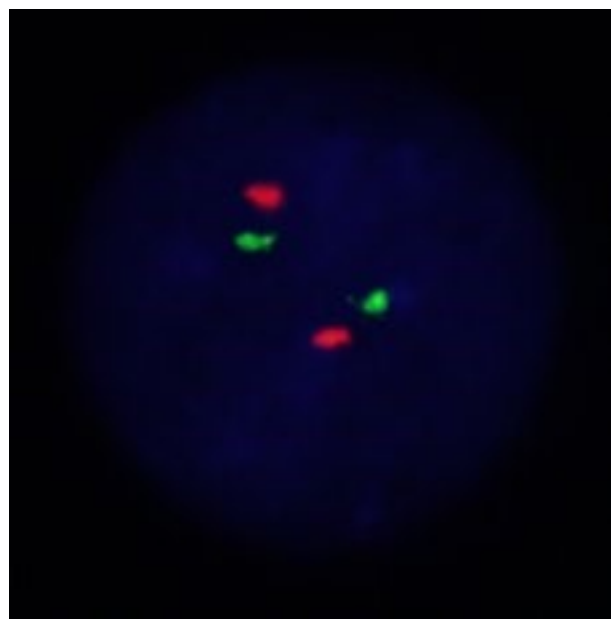
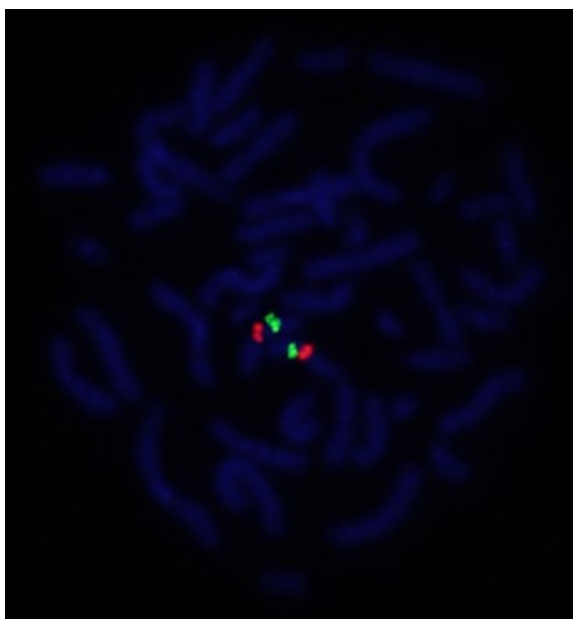
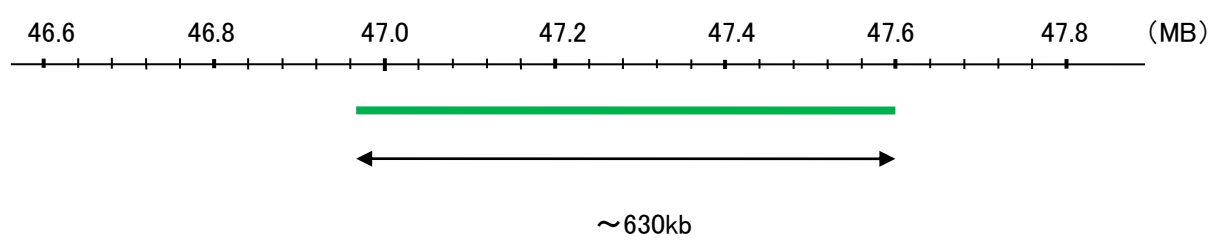
CEN11p

Probe Size Approximately 630kb  
Fluorophore FITC  
Location 11p11.12

CCND1•FGF19



CEN11p



Representative images of normal human cell (lymphocyte) stain with the dual color FISH probe. The left image is chromosomes at metaphase, and the right image is an interphase nucleus.