

Probe FGF4•FGF3/CEN11p Dual Color FISH Probe
Product No. GC160

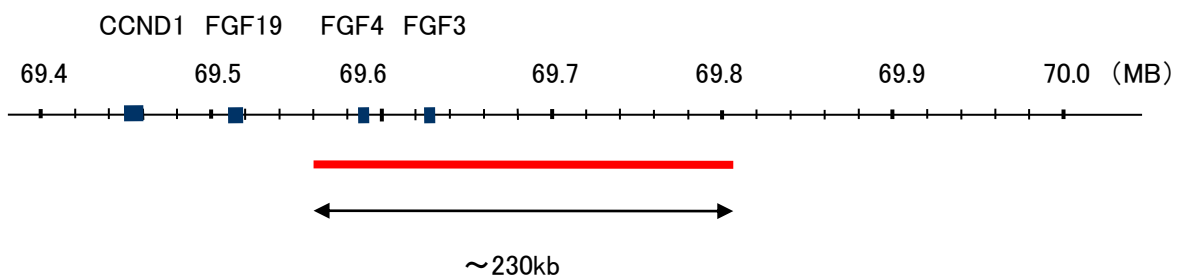
FGF4•FGF3

Probe Size Approximately 230kb
Fluorophore TexRed
Location 11q13.1
Also known asHST; KFGF; HST-1; HSTF1; K-FGF; HBGF-4 • INT2; HBGF-3

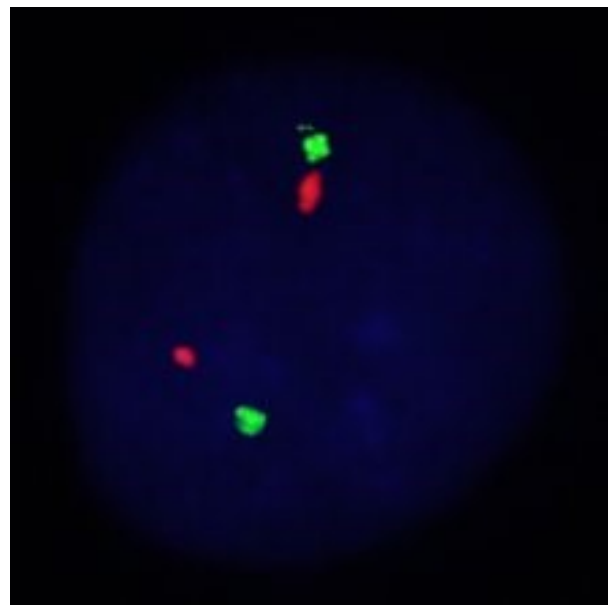
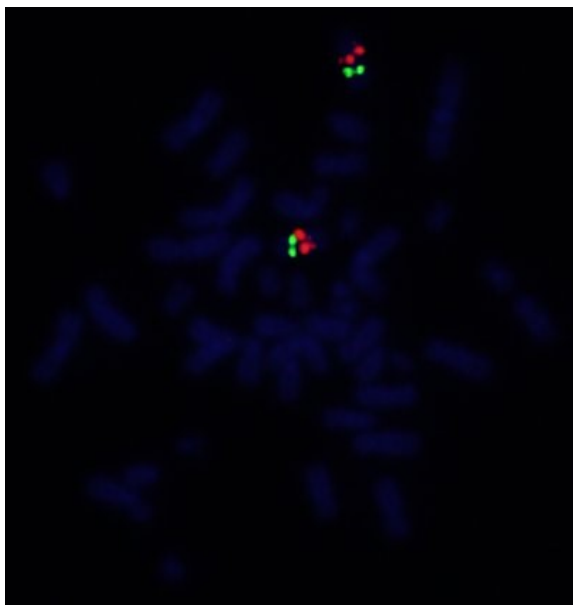
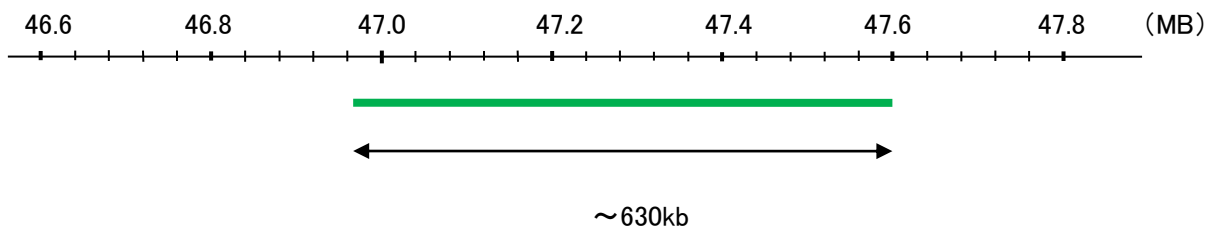
CEN11p

Probe Size Approximately 630kb
Fluorophore FITC
Location 11p11.12

FGF4•FGF3



CEN11p



Representative images of normal human cell (lymphocyte) stain with the dual color FISH probe. The left image is chromosomes at metaphase, and the right image is an interphase nucleus.