

Probe FGF3/CEN11p Dual Color FISH Probe
Product No. GC162

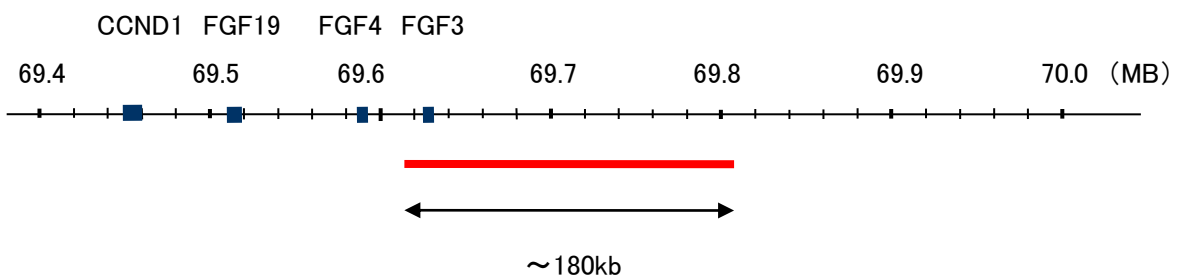
FGF3

Probe Size Approximately 180kb
Fluorophore TexRed
Location 11q13.1
Also known INT2; HBGF-3

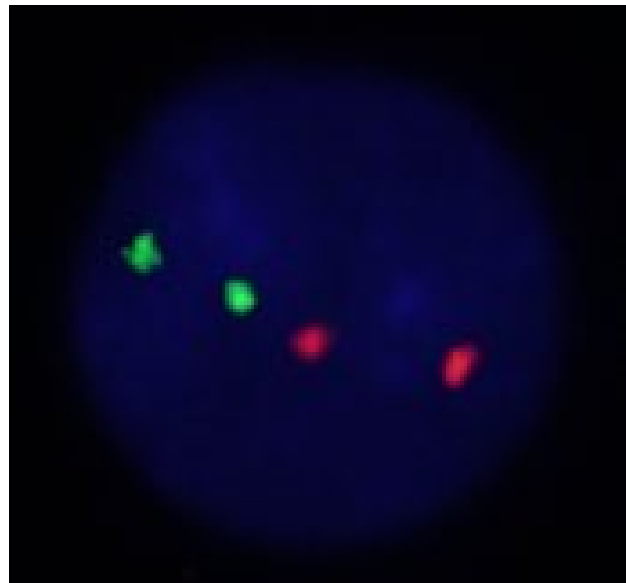
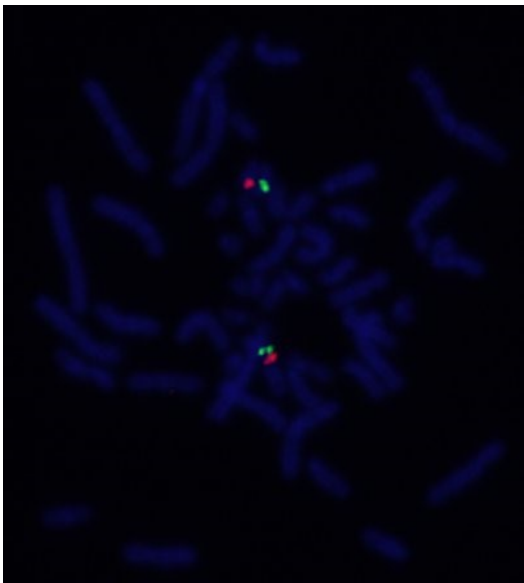
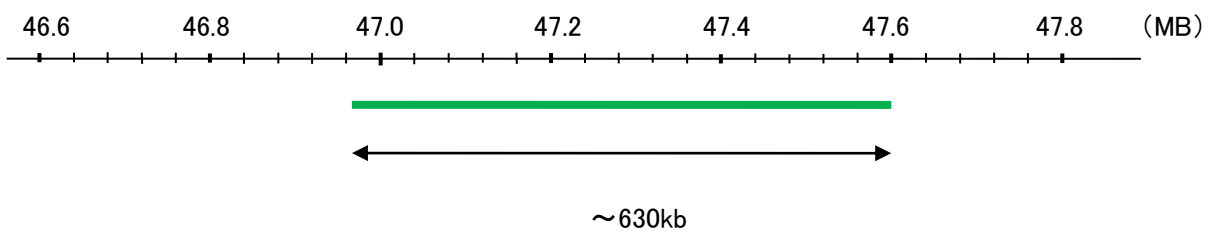
CEN11p

Probe Size Approximately 630kb
Fluorophore FITC
Location 11p11.12

FGF3



CEN11p



Representative images of normal human cell (lymphocyte) stain with the dual color FISH probe. The left image is chromosomes at metaphase, and the right image is an interphase nucleus.