

Probe GSTP1/CEN11p Dual Color FISH Probe  
Product No. GC166

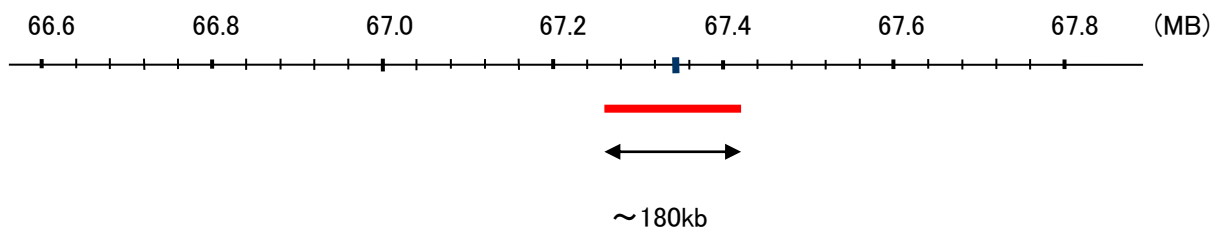
GSTP1

Probe Size Approximately 180kb  
Fluorophore TexRed  
Location 11q13.2  
Also known as PI; DFN7; GST3; GSTP; FAEES3; HEL-S-22

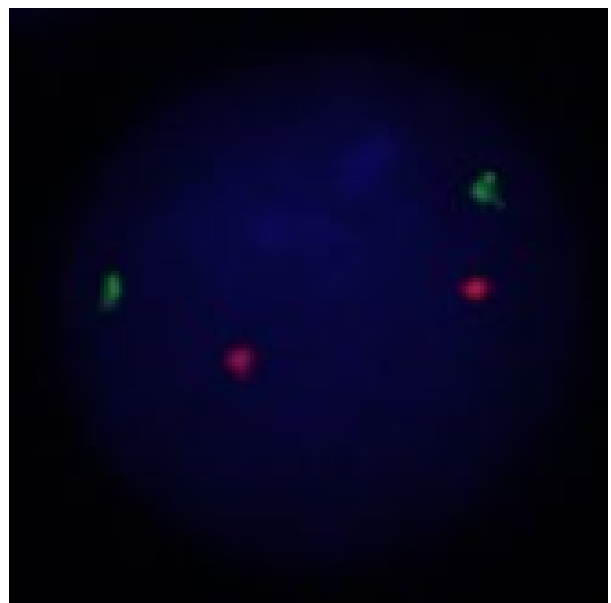
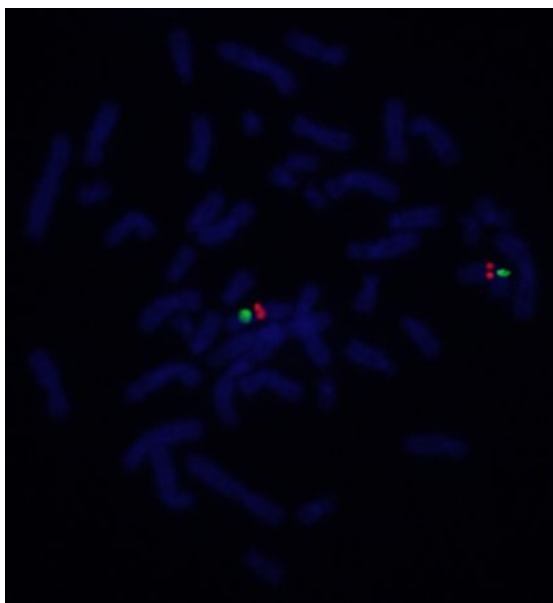
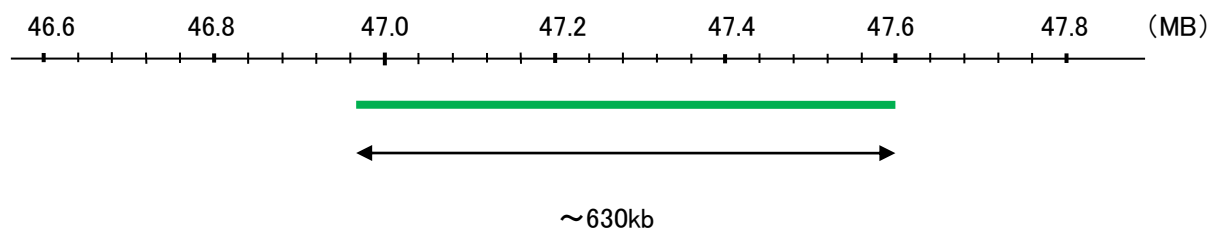
CEN11p

Probe Size Approximately 630kb  
Fluorophore FITC  
Location 11p11.12

GSTP1



CEN11p



Representative images of normal human cell (lymphocyte) stain with the dual color FISH probe. The left image is chromosomes at metaphase, and the right image is an interphase nucleus.