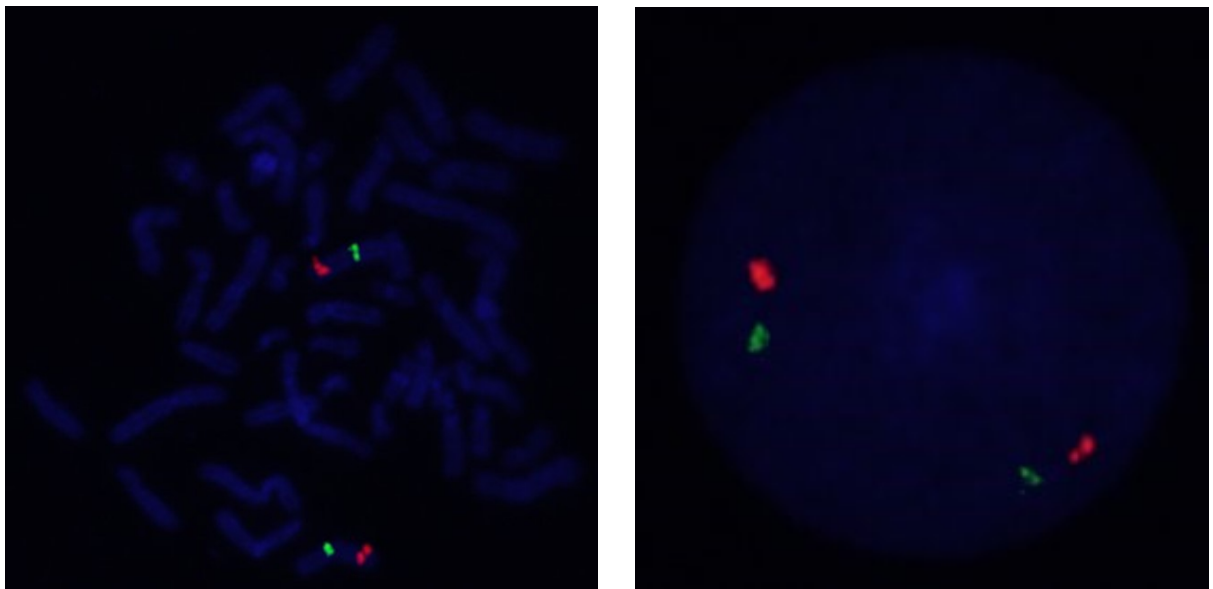
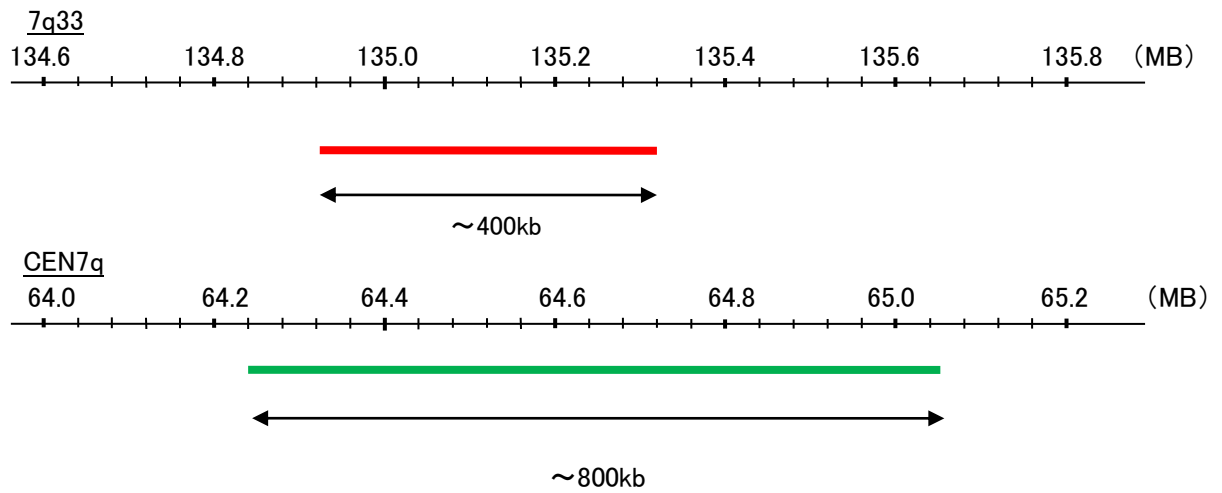


Probe 7q33/CEN7q Dual Color FISH Probe
Product No. GC168

7q33
Probe Size Approximately 400kb
Fluorophore TexRed
Location 7q33

CEN7q
Probe Size Approximately 800kb
Fluorophore FITC
Location 7q11.21



Representative images of normal human cell (lymphocyte) stain with the dual color FISH probe. The left image is chromosomes at metaphase, and the right image is an interphase nucleus.