

Probe miR-15a/CEN13q Dual Color FISH Probe
Product No. GC172

miR-15a

Probe Size Approximately 170kb
Fluorophore TexRed
Location 13q14
Also known as MIRN15A; mir-15a; miRNA15A; hsa-mir-15a

CEN13q

Probe Size Approximately 550kb
Fluorophore FITC
Location 13q12.11

miR-15a

50.0 50.2 50.4 50.6 50.8 51.0 51.2 (MB)



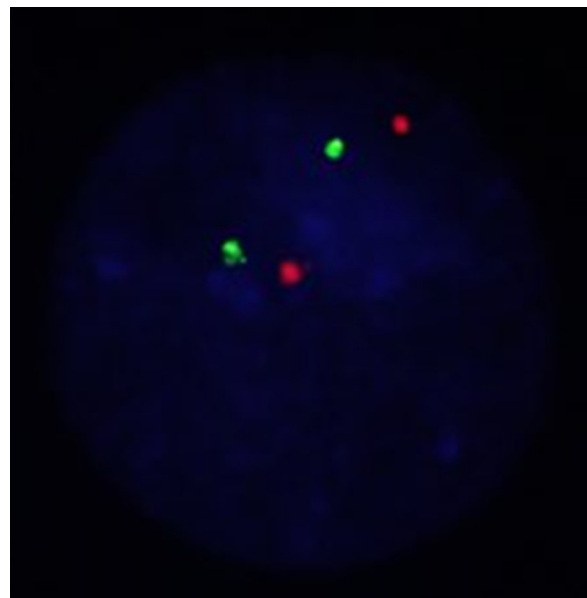
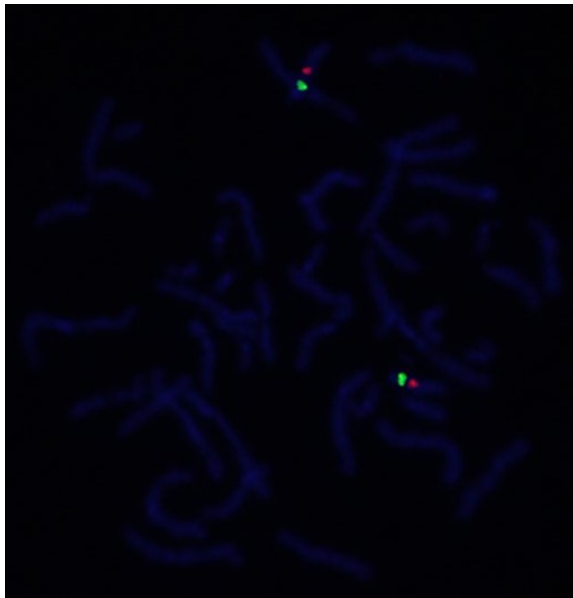
~170kb

CEN13q

27.4 27.6 27.8 28.0 28.2 28.4 28.6 (MB)



~550kb



Representative images of normal human cell (lymphocyte) stain with the dual color FISH probe. The left image is chromosomes at metaphase, and the right image is an interphase nucleus.