

Probe DDR2/CEN1p Dual Color FISH Probe
Product No. GC176

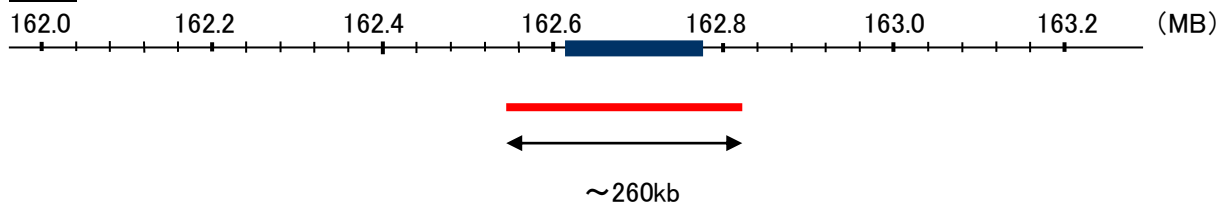
DDR2

Probe Size Approximately 260kb
Fluorophore TexRed
Location 1q23.3
Also known as TKT; MIG20a; NTRKR3; TYRO10

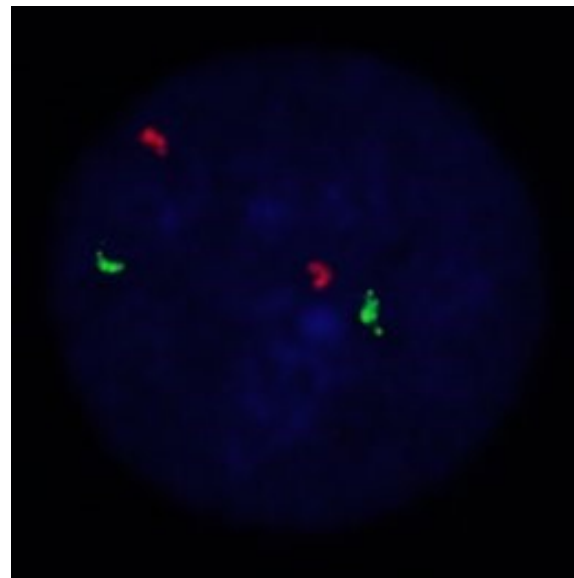
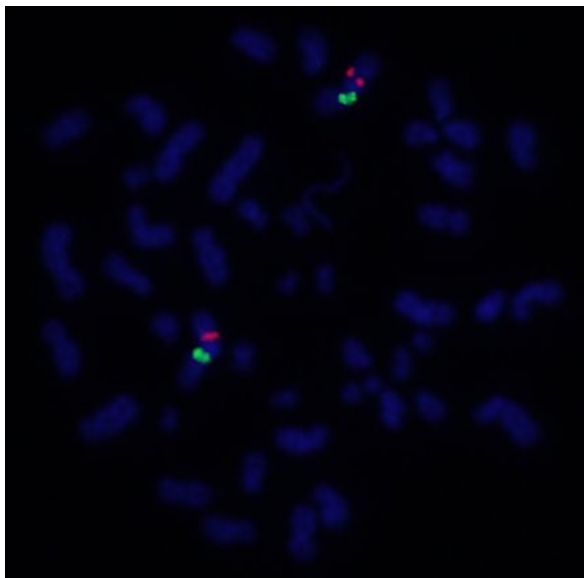
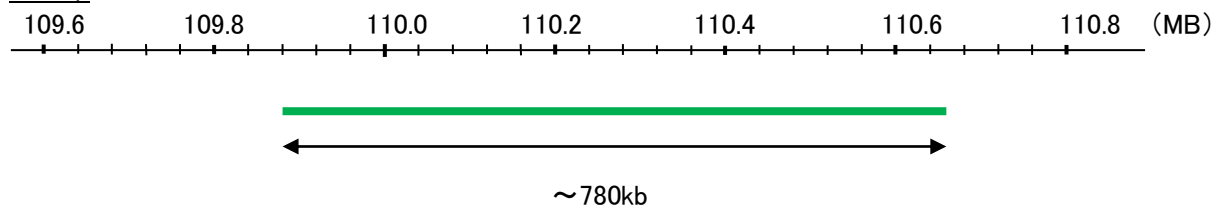
CEN1p

Probe Size Approximately 780kb
Fluorophore FITC
Location 1p13.3

DDR2



CEN1p



Representative images of normal human cell (lymphocyte) stain with the dual color FISH probe. The left image is chromosomes at metaphase, and the right image is an interphase nucleus.