

Probe MIIP/CEN1p Dual Color FISH Probe
Product No. GC177

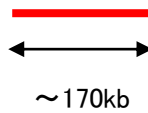
MIIP

Probe Size Approximately 170kb
Fluorophore TexRed
Location 1p36.22
Also known as IIP45

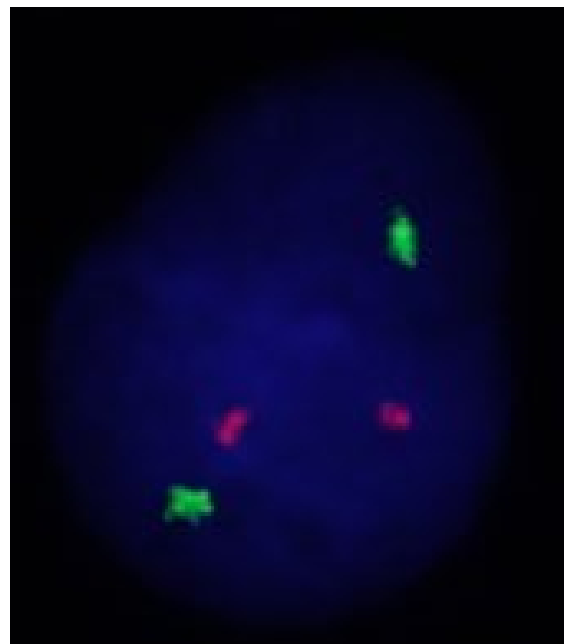
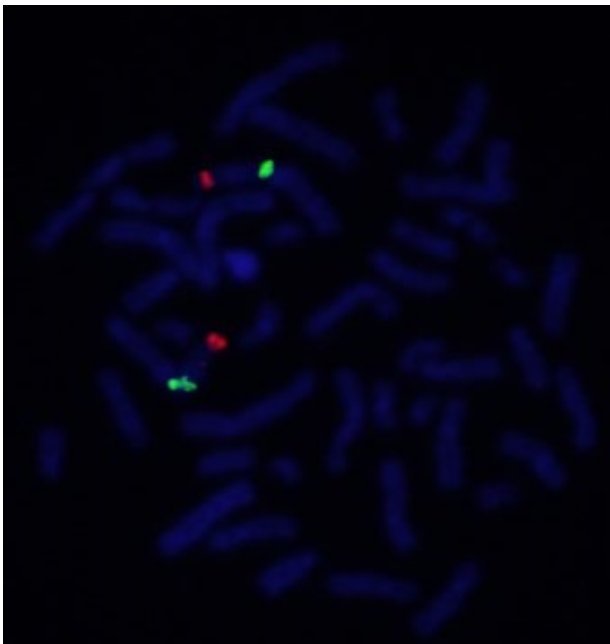
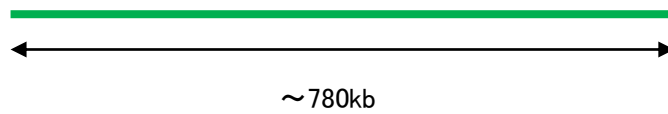
CEN1p

Probe Size Approximately 780kb
Fluorophore FITC
Location 1p13.3

MIIP



CEN1p



Representative images of normal human cell (lymphocyte) stain with the dual color FISH probe. The left image is chromosomes at metaphase, and the right image is an interphase nucleus.