

Probe EGFR/c-met/CEN7q Tricolor FISH Probe
Product No. GC178

EGFR

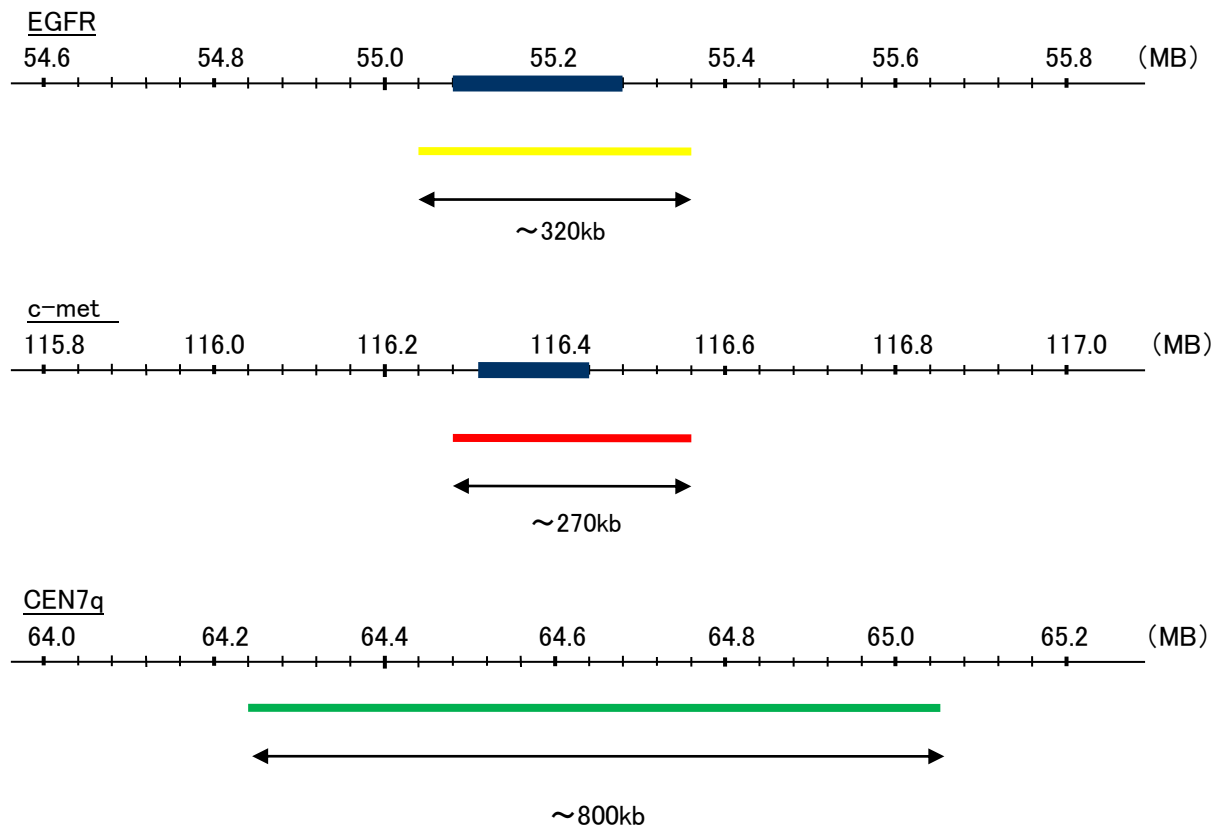
Probe Size Approximately 320kb
Fluorophore R6G
Location 7p12
Also known as ERBB; HER1; mENA; ERBB1; PIG61; NISBD2

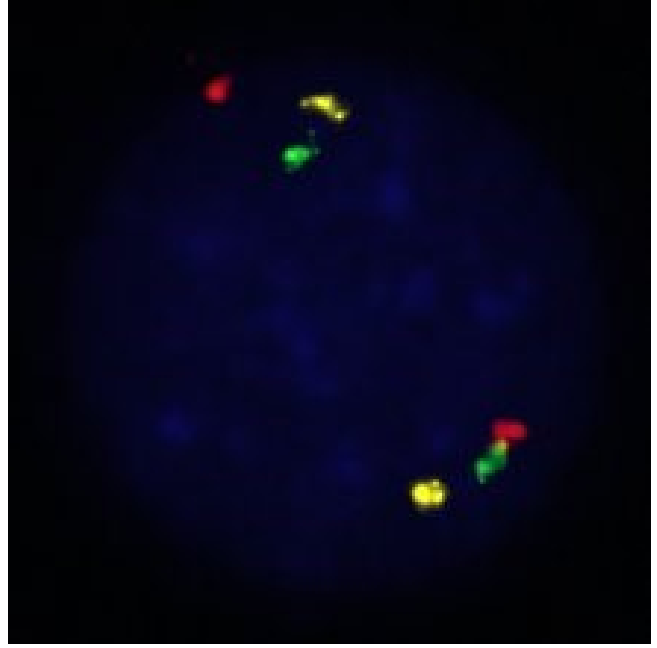
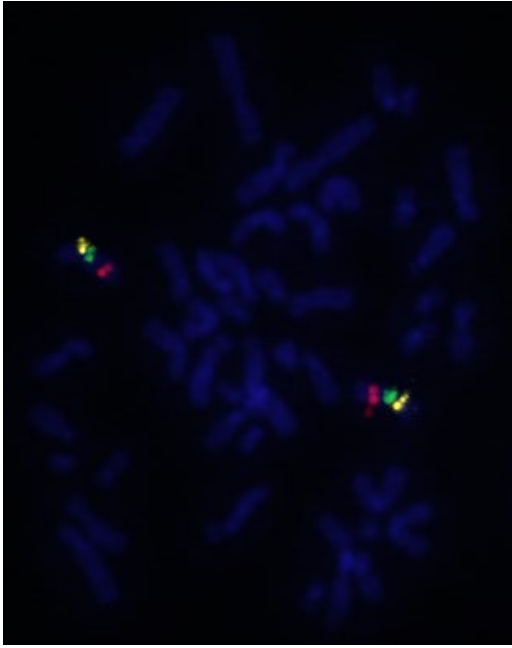
c-met

Probe Size Approximately 270kb
Fluorophore TexRed
Location 7q31
Also known as HGFR; AUTS9; RCCP2; MET; DFN97

CEN7q

Probe Size Approximately 800kb
Fluorophore FITC
Location 7q11.21





Representative images of normal human cell (lymphocyte) stain with the dual color FISH probe. The left image is chromosomes at metaphase, and the right image is an interphase nucleus.