

Probe SMARCB1/CEN22q Dual Color FISH Probe
Product No. GC181

SMARCB1

Probe Size Approximately 250kb

Fluorophore TexRed

Location 22q11.23

Also known as RDT; CSS3; INI1; SNF5; Snr1; BAF47; MRD15; RTPS1; Sfh1p; hSNFS; SNF5L1; SWNTS1; PPP1R144

CEN22q

Probe Size Approximately 620kb

Fluorophore FITC

Location 22q11.22

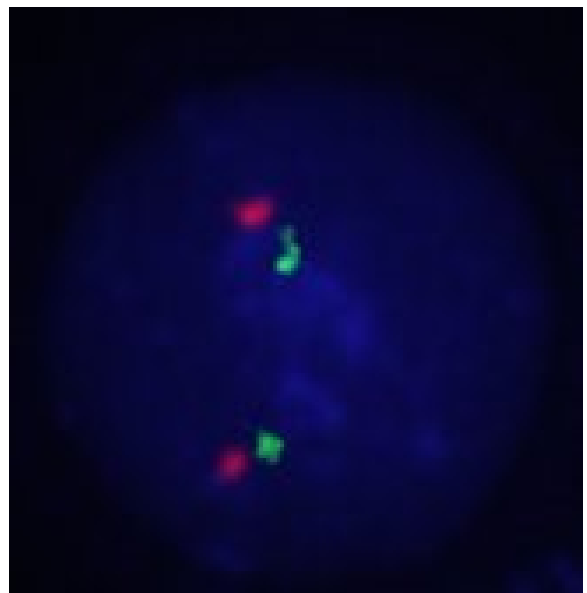
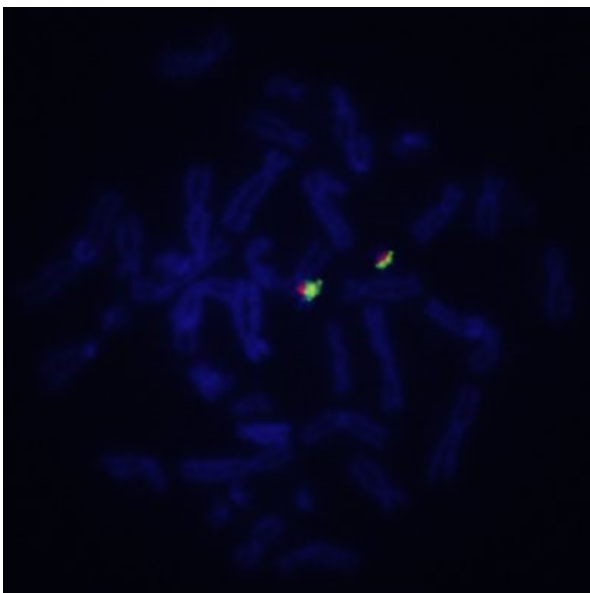
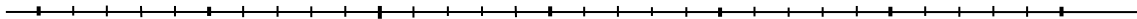
SMARCB1

23.6 23.8 24.0 24.2 24.4 24.6 24.8 (MB)



CEN22q

25.0 25.2 25.4 25.6 25.8 25.0 25.2 (MB)



Representative images of normal human cell (lymphocyte) stain with the dual color FISH probe. The left image is chromosomes at metaphase, and the right image is an interphase nucleus.