

Probe HER2/TOP2A/CEN17q TriColor FISH Probe  
Product No. GC182

#### HER2

Probe Size Approximately 220kb  
Fluorophore TexRed  
Location 17q12  
Also known as NEU; NGL; ERBB2; TKR1; CD340; HER-2; MLN 19; HER-2/neu

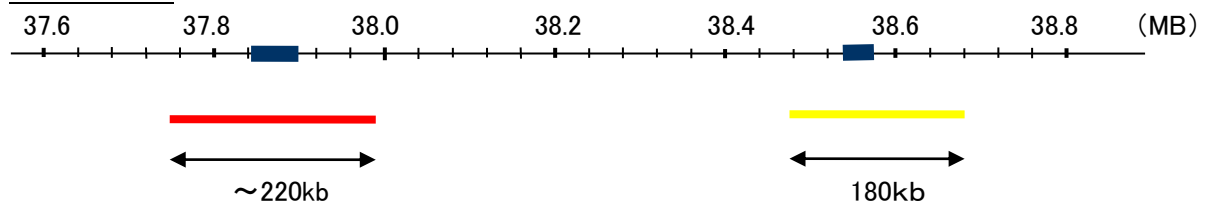
#### TOP2A

Probe Size Approximately 180kb  
Fluorophore R6G  
Location 17q21  
Also known as TOP2; TP2A

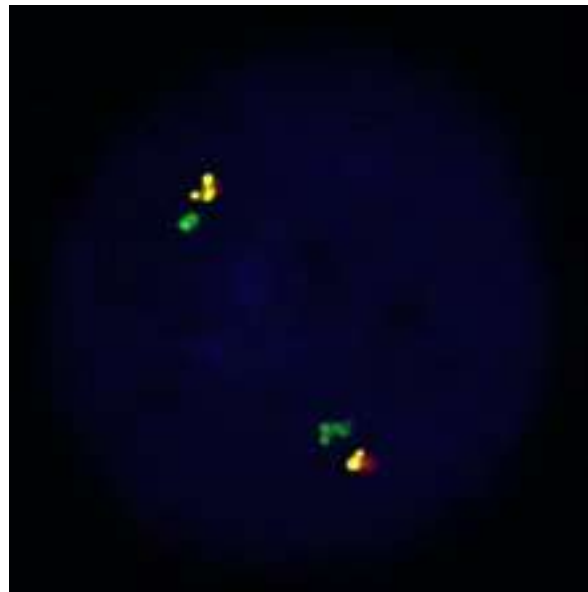
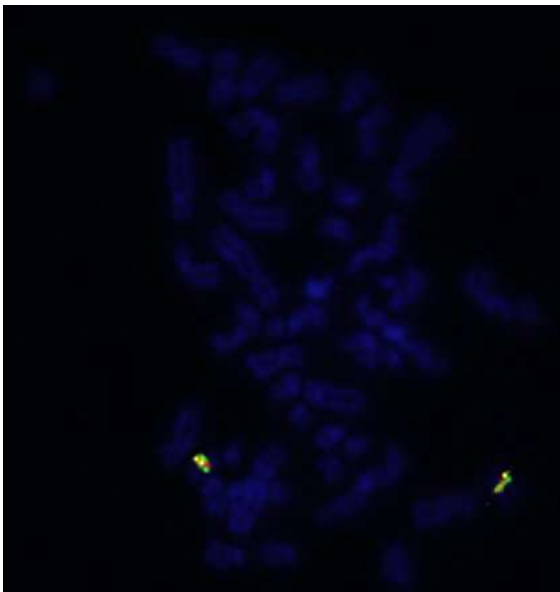
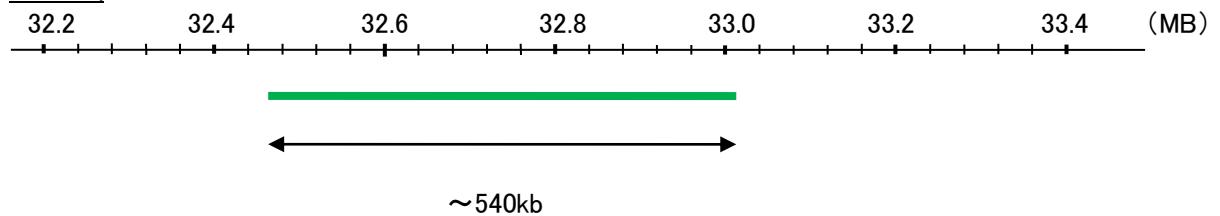
#### CEN17q

Probe Size Approximately 540kb  
Fluorophore FITC  
Location 17q12

#### HER2/TOP2A



#### CEN17q



Representative images of normal human cell (lymphocyte) stain with the dual color FISH probe. The left image is chromosomes at metaphase, and the right image is an interphase nucleus.